

Datasheet for ABIN934058

anti-Lactate Dehydrogenase A antibody (AA 1-332)[Go to Product page](#)**2** Images

Overview

Quantity:	100 µL
Target:	Lactate Dehydrogenase A (LDHA)
Binding Specificity:	AA 1-332
Reactivity:	Human
Host:	Mouse
Clonality:	Monoclonal
Conjugate:	This Lactate Dehydrogenase A antibody is un-conjugated
Application:	Western Blotting (WB), ELISA, Immunofluorescence (IF)

Product Details

Immunogen:	LDHA antibody was raised in mouse using recombinant human LDHA (1-332aa) purified from E.coli as the immunogen.
Clone:	AT1A4
Isotype:	IgG2b kappa
Purification:	LDHA antibody was purified by protein-G affinity chromatography

Target Details

Target:	Lactate Dehydrogenase A (LDHA)
Alternative Name:	LDHA (LDHA Products)
Pathways:	Warburg Effect

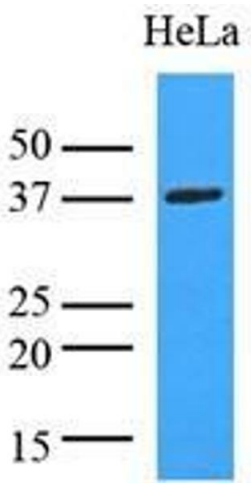
Application Details

Application Notes:	IF: 1:500-1:8,000, WB: 1:500-1:8,000
Restrictions:	For Research Use only

Handling

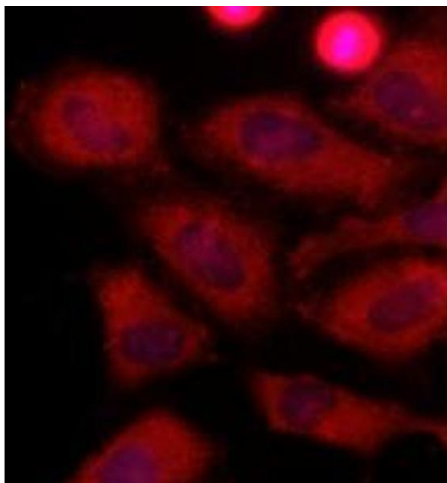
Format:	Liquid
Concentration:	Lot specific
Buffer:	as a liquid PBS, pH 7.4, with 0.1 % NaN3.
Preservative:	Sodium azide
Precaution of Use:	This product contains Sodium azide: a POISONOUS AND HAZARDOUS SUBSTANCE which should be handled by trained staff only.
Handling Advice:	Avoid repeated freeze/thaw cycles
Storage:	-20 °C
Storage Comment:	Store at 4 °C for short term storage. Aliquot and store at -20 °C for long term storage.

Images



Western Blotting

Image 1. Cell lysates of HeLa (35 ug) were resolved by SDS-PAGE, transferred to nitrocellulose membrane and probed with anti-human LDHA (1:8000). Proteins were visualized using a goat anti-mouse secondary antibody conjugated to HRP and an ECL detection system.



Immunofluorescence

Image 2. Immunofluorescence of human HeLa cells stained with Hoechst 3342 (Blue) for nucleus staining and monoclonal anti-human LDHA antibody (1:500) with Texas Red (Red).