

Datasheet for ABIN934060

**anti-ERK2 antibody**[Go to Product page](#)**2** Images

## Overview

Quantity:	100 µL
Target:	ERK2 (MAPK1)
Reactivity:	Human
Host:	Mouse
Clonality:	Monoclonal
Application:	Western Blotting (WB), ELISA, Immunofluorescence (IF)

## Product Details

Immunogen:	MAPK1 antibody was raised in mouse using recombinant human MAPK1 (1-360) purified from E.coli as the immunogen.
Clone:	AT1A4
Isotype:	IgG2b kappa
Purification:	MAPK1 antibody was purified by protein-G affinity chromatography

## Target Details

Target:	ERK2 (MAPK1)
Alternative Name:	MAPK1 ( <a href="#">MAPK1 Products</a> )
Pathways:	<a href="#">MAPK Signaling</a> , <a href="#">RTK Signaling</a> , <a href="#">Apoptosis</a> , <a href="#">Interferon-gamma Pathway</a> , <a href="#">Fc-epsilon Receptor Signaling Pathway</a> , <a href="#">Response to Growth Hormone Stimulus</a> , <a href="#">Activation of Innate immune Response</a> , <a href="#">Cellular Response to Molecule of Bacterial Origin</a> , <a href="#">Hepatitis C</a> , <a href="#">Protein targeting to Nucleus</a> , <a href="#">Toll-Like Receptors Cascades</a> , <a href="#">Monocarboxylic Acid Catabolic Process</a> , <a href="#">Autophagy</a> , <a href="#">G-</a>

## Target Details

protein mediated Events, Signaling Events mediated by VEGFR1 and VEGFR2, Signaling of Hepatocyte Growth Factor Receptor, VEGFR1 Specific Signals, BCR Signaling, S100 Proteins

## Application Details

Application Notes: IF: 1:500-1:3,000, WB: 1:500-1:3,000

Restrictions: For Research Use only

## Handling

Format: Liquid

Concentration: Lot specific

Buffer: as a liquid PBS, pH 7.4, with 0.1 % NaN<sub>3</sub>.

Preservative: Sodium azide

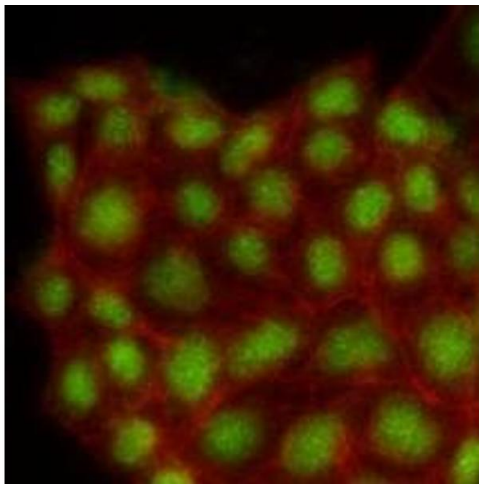
Precaution of Use: This product contains Sodium azide: a POISONOUS AND HAZARDOUS SUBSTANCE which should be handled by trained staff only.

Handling Advice: Avoid repeated freeze/thaw cycles

Storage: -20 °C

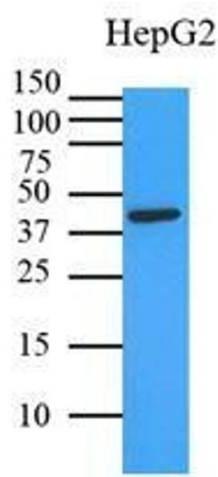
Storage Comment: Store at 4 °C for short term storage. Aliquot and store at -20 °C for long term storage.

## Images



### Immunofluorescence

**Image 1.** Immunofluorescence of human MCF7 cells stained with Phalloidin-TRITC (Red) for Actin staining and monoclonal anti-human MAPK1 antibody (1:500) with Alexa 488 (Green).



**Western Blotting**

**Image 2.** Cell lysates of HepG2 (35 ug) were resolved by SDS-PAGE, transferred to PVDF membrane and probed with anti-human MAPK1 (1:3000). Proteins were visualized using a goat anti-mouse secondary antibody conjugated to HRP and an ECL detection system.