

Datasheet for ABIN934061  
**anti-SUMO2 antibody (AA 1-93)**



[Go to Product page](#)

3 Images

## Overview

Quantity:	100 µL
Target:	SUMO2
Binding Specificity:	AA 1-93
Reactivity:	Human
Host:	Mouse
Clonality:	Monoclonal
Conjugate:	This SUMO2 antibody is un-conjugated
Application:	Western Blotting (WB), ELISA, Immunofluorescence (IF)

## Product Details

Immunogen:	SUMO2 antibody was raised in mouse using recombinant human SUMO2 (1-93aa) purified from E.coli as the immunogen.
Clone:	AT10F1
Isotype:	IgG2b kappa
Purification:	SUMO2 antibody was purified by protein-G affinity chromatography

## Target Details

Target:	SUMO2
Alternative Name:	SUMO2 ( <a href="#">SUMO2 Products</a> )
Pathways:	<a href="#">Methionine Biosynthetic Process</a>

## Application Details

---

Application Notes: IF: 1:250-1:500, WB: 1:250-1:500

---

Restrictions: For Research Use only

---

## Handling

---

Format: Liquid

---

Concentration: Lot specific

---

Buffer: as a liquid PBS, pH 7.4, with 0.1 % NaN<sub>3</sub>.

---

Preservative: Sodium azide

---

Precaution of Use: This product contains Sodium azide: a POISONOUS AND HAZARDOUS SUBSTANCE which should be handled by trained staff only.

---

Handling Advice: Avoid repeated freeze/thaw cycles

---

Storage: -20 °C

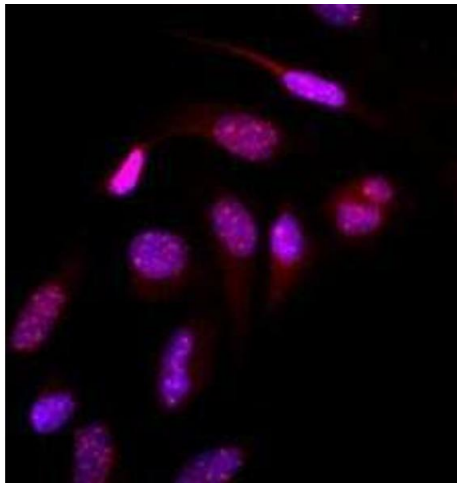
---

Storage Comment: Store at 4 °C for short term storage. Aliquot and store at -20 °C for long term storage.

---

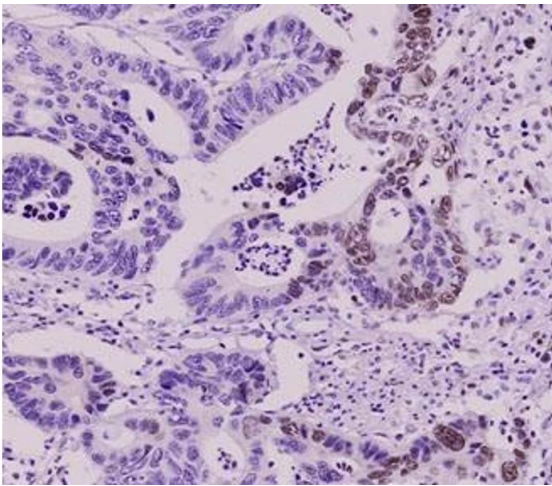
## Images

---



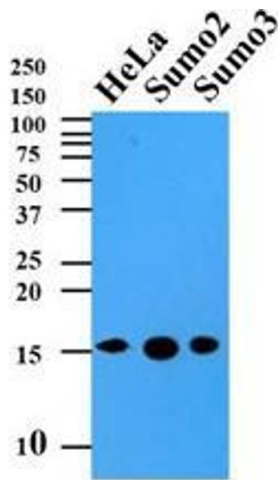
### Immunofluorescence

**Image 1.** Immunofluorescence of human HeLa cells stained with Hoechst 3342 (Blue) for nucleus staining and monoclonal anti-human SUMO2/3 antibody (1:500) with Texas Red (Red).



### Immunohistochemistry

**Image 2.** Paraffin embedded sections of colorectal tissue were incubated with anti-human SUMO2/3 antibody (1:50) for 2 hours at room temperature. Antigen retrieval was performed in 0.1M sodium citrate buffer and detected using Diaminobenzidine (DAB).



### Western Blotting

**Image 3.** Cell lysates of HeLa (35 ug) and recombinant proteins (10 ng) were resolved by SDS-PAGE, transferred to PVDF membrane and probed with anti-human SUMO2/3 (1:500). Proteins were visualized using a goat anti-mouse secondary antibody conjugated to HRP and an ECL detection system.