

Datasheet for ABIN934095
anti-KCTD15 antibody



[Go to Product page](#)

2 Images

Overview

Quantity:	100 µL
Target:	KCTD15
Reactivity:	Human
Host:	Mouse
Clonality:	Monoclonal
Conjugate:	This KCTD15 antibody is un-conjugated
Application:	Western Blotting (WB), ELISA, Immunofluorescence (IF)

Product Details

Immunogen:	KCTD15 antibody was raised in mouse using recombinant human KCTD15 (1-234) purified from E.coli as the immunogen.
Clone:	AT4C3
Isotype:	IgG3
Purification:	KCTD15 antibody was purified by protein-G affinity chromatography

Target Details

Target:	KCTD15
Alternative Name:	KCTD15 (KCTD15 Products)

Application Details

Application Notes: IF: 1:250-1:500, WB: 1:250-1:500

Restrictions: For Research Use only

Handling

Format: Liquid

Concentration: Lot specific

Buffer: as a liquid PBS, pH 7.4, with 0.1 % NaN₃.

Preservative: Sodium azide

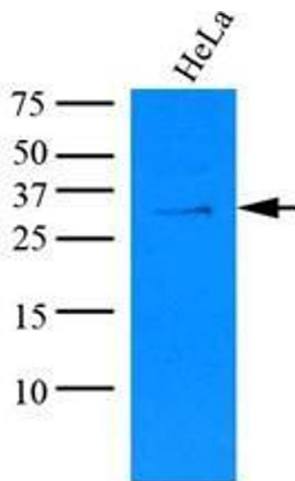
Precaution of Use: This product contains Sodium azide: a POISONOUS AND HAZARDOUS SUBSTANCE which should be handled by trained staff only.

Handling Advice: Avoid repeated freeze/thaw cycles

Storage: -20 °C

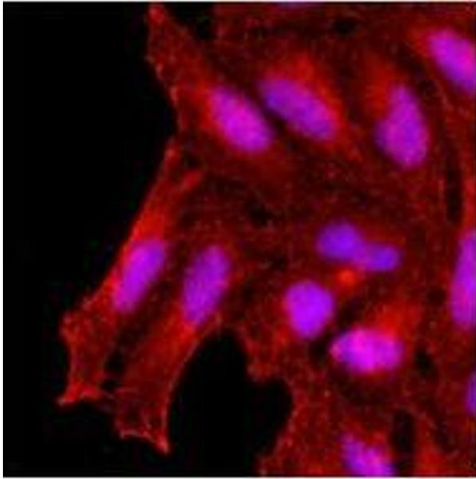
Storage Comment: Store at 4 °C for short term storage. Aliquot and store at -20 °C for long term storage.

Images



Western Blotting

Image 1. Cell lysates of HeLa (35 ug) were resolved by SDS-PAGE, transferred to nitrocellulose membrane and probed with anti-human KCTD15 (1:1000). Proteins were visualized using a goat anti-mouse secondary antibody conjugated to HRP and an ECL detection system.



Immunofluorescence

Image 2. Immunofluorescence of human HeLa cells stained with monoclonal anti-human KCDT15 antibody (1:500) with Texas Red (Red). Nucleus was stained by Hoechst 33342 (Blue).