

Datasheet for ABIN934871 **SNCA Protein (active)**



[Go to Product page](#)

1 Image

Overview

Quantity:	100 µg
Target:	SNCA
Protein Characteristics:	active
Origin:	Human
Source:	Escherichia coli (E. coli)
Protein Type:	Recombinant
Application:	SDS-PAGE (SDS)

Product Details

Sequence:	MDVFMKGLSK AKEGVVAAAE KTKQGVAEAP GKTKEGVLYV GSKTKEGVVH GVATVAEKTK EQVTNVGGAV VTGVTAVAQK TVEGAGSIAA ATGFVKKDQL GKNEEGAPQE GILEDMPVDP DNEAYEMPSE EGYQDYEPEA
Characteristics:	Purified recombinant Human alpha Synuclein A30 P protein Expression System: E.coli Molecular weight on SDS-PAGE will appear higher.
Purity:	> 95 % pure

Target Details

Target:	SNCA
Alternative Name:	alpha Synuclein A30P (SNCA Products)
Background:	A Parkinson's disease-related point mutant (A30P) of alpha-synuclein. A30P mutant of alpha-

Target Details

synuclein was overexpressed in E. coli and the recombinant protein was purified to apparent homogeneity by taking advantage of the thermosolubility of the protein and by using conventional column chromatography techniques.

Alternative Names: alpha-Synuclein protein, MGC64356 protein, MGC110988 protein, SNCA protein, Synuclein alpha protein, Non-A4 component of amyloid precursor protein, MGC105443 protein, alphaSYN protein, Alpha-synuclein isoform NACP140 protein, Non A4 component of amyloid precursor protein, PARK4 protein, Non-A beta component of AD amyloid protein, PARK1 protein, NACP protein, PD1 protein, Non A beta component of AD amyloid protein, Parkinson disease familial 1 protein, , precursor of PARK 1 protein, PARK 4 protein, Non-A-beta component of alzheimers disease amyloid protein, MGC127560 protein, Alpha synuclein protein, PD 1 protein

Molecular Weight: 14.4 kDa (140 AA)

Pathways: [Synaptic Membrane](#), [Regulation of G-Protein Coupled Receptor Protein Signaling](#), [Positive Regulation of Endopeptidase Activity](#), [Regulation of Carbohydrate Metabolic Process](#), [Platelet-derived growth Factor Receptor Signaling](#), [Negative Regulation of Transporter Activity](#), [Regulation of long-term Neuronal Synaptic Plasticity](#)

Application Details

Application Notes: Alpha synuclein protein has been used in SDS PAGE and may be suitable for use in other assays to be determined by the end user.

Restrictions: For Research Use only

Handling

Format: Liquid

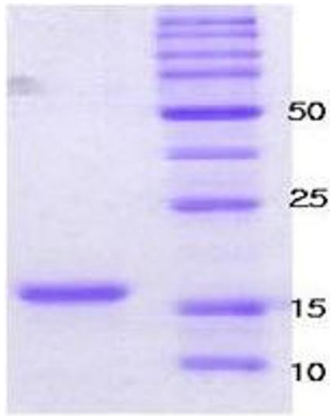
Concentration: 1 mg/mL

Buffer: Supplied as a liquid in 20 mM Tris-HCl buffer, pH 7.5, containing 0.1 M NaCl.

Handling Advice: Avoid repeated freeze/thaw cycles.

Storage: RT/-20 °C

Storage Comment: Store at 4 °C for short term storage (1/2 weeks). Aliquot and store at -20 °C or -70 °C for long term storage.



15% SDS-PAGE (3ug)

SDS-PAGE

Image 1. Figure annotation denotes ug of protein loaded and % gel used.