

Datasheet for ABIN934879

**beta Synuclein Protein****1** Image[Go to Product page](#)

## Overview

Quantity:	100 µg
Target:	beta Synuclein (SNCB)
Origin:	Human
Source:	Escherichia coli (E. coli)
Protein Type:	Recombinant
Application:	SDS-PAGE (SDS)

## Product Details

Sequence: MDVFMKGLSM AKEGVVAAA E KTKQGVTEAA EKTKEGVLYV GSKTREGVVQ GVASVAEKT  
EQASHLGGAV FSGAGNIAAA TGLVKREEFP TDLKPEEVAQ EAAEEPLIEP LMEPEGESYE  
DPPQEEYQEY EPEA

Characteristics: Purified recombinant Human beta Synuclein protein  
Expression System: E.coli  
Molecular weight on SDS-PAGE will appear higher.

Purity: > 95 % pure

## Target Details

Target: beta Synuclein (SNCB)

Alternative Name: beta Synuclein ([SNCB Products](#))

Background: Beta-synuclein, an acidic neuronal protein of 134 amino acids, is extremely heat-resistant. beta-synuclein also has a chaperone-like activity.

## Target Details

Alternative Names: beta synuclein protein, Phosphoneuroprotein 14 protein, Beta synuclein protein, SNCB beta-Synuclein protein, PNP14 protein, B-synuclein protein, Synuclein beta

Molecular Weight: 14.2 kDa (134 AA)

## Application Details

Application Notes: Beta synuclein protein has been used in SDS PAGE and may be suitable for use in other assays to be determined by the end user.

Restrictions: For Research Use only

## Handling

Format: Liquid

Concentration: 1 mg/mL

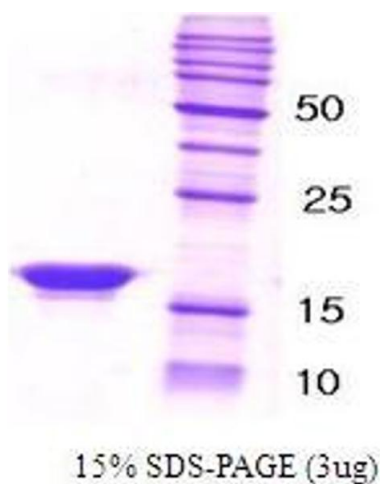
Buffer: Supplied as a liquid in 20 mM Tris-HCl buffer, pH 7.5, containing 0.1 M NaCl, 0 mM MgCl<sub>2</sub>.

Handling Advice: Avoid repeated freeze/thaw cycles.

Storage: RT/-20 °C

Storage Comment: Store at 4 °C for short term storage (1/2 weeks). Aliquot and store at -20 °C or -70 °C for long term storage.

## Images



### SDS-PAGE

**Image 1.** Figure annotation denotes ug of protein loaded and % gel used.