

Datasheet for ABIN934885

**Chaperonin GroEL (GroEL) Protein**[Go to Product page](#)**1** Image

## Overview

Quantity:	100 µg
Target:	Chaperonin GroEL (GroEL)
Origin:	E. coli
Source:	Escherichia coli (E. coli)
Protein Type:	Recombinant
Application:	SDS-PAGE (SDS)

## Product Details

Sequence:	MAAKDVKFGN DARVKMLRGV NVLADAVKVT LGPKGRNVVL DKSFGAPTIT KDGVSVAREI ELEDKFENMG AQMVKEVASK ANDAAGDGTT TATVLAQAI TEGLKAVAAG MNPMDLKRGI DKAVTAAVEE LKALSVPCSD SKAIAQVGTI SANSDETVGK LIAEAMDKVG KEGVITVEDG TGLQDELDDV EGMQFDRGYL SPYFINKPET GAVELESPFI LLADKKISNI REMLPVLEAV AKAGKPLLI AEDVEGEALA TLVVNTMRGI VKVAAVKAPG FGDRRKAMLQ DIATLTGGTV ISEEIGMELE KATLEDLGQA KRVVINKDTT TIIDGVGEEA AIQGRVAQIR QQIEEATSDY DREKLQERVA KLAGGVAVIK VGAATEVEMK EKKARVEDAL HATRAAVEEG VVAGGGVALI RVASKLADLR GQNEQNVGI KVALRAMEAP LRQIVLNCGE EPSVVANTVK GGDGNYGYNA ATEEYGNMID MGILDPTKVT RSALQYAASV AGLMITTECM VTDLPKNDA DLGAAGGMGG MGGMGGMM
Characteristics:	Purified recombinant E.coli GroEL protein Expression System: E.coli Molecular weight on SDS-PAGE will appear higher.
Purity:	> 95 % pure

## Target Details

---

Target:	Chaperonin GroEL (GroEL)
Alternative Name:	GroEL ( <a href="#">GroEL Products</a> )
Background:	<p>GroEL protein is the major heat shock protein of E. coli and belongs to the chaperonin(HSP60) family. GroEL protein prevents misfolding of proteins and promotes the refolding and proper assembly of unfolded polypeptides generated under stress conditions. GroEL gene was amplified by PCR from E. coli and cloned into an expression vector. This protein was overexpressed in E. coli and was purified by using conventional chromatography techniques.</p> <p>Alternative Names: mopA protein, 60 kDa chaperonin protein, groL protein, groEL protein, groEL protein protein, chaperonin groel, Protein Cpn60 protein</p>
Molecular Weight:	57.3 kDa (548 AA)

## Application Details

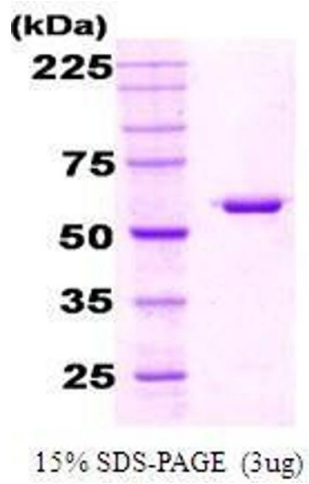
---

Application Notes:	GroEL protein has been used in SDS PAGE and may be suitable for use in other assays to be determined by the end user.
Restrictions:	For Research Use only

## Handling

---

Format:	Liquid
Concentration:	1 mg/mL
Buffer:	Supplied as a liquid in 25 mM Tris-HCl, pH7.5, containing 105 mM NaCl, 5 mM DTT, and 10 % glycerol.
Preservative:	Dithiothreitol (DTT)
Precaution of Use:	This product contains Dithiothreitol: a POISONOUS AND HAZARDOUS SUBSTANCE, which should be handled by trained staff only.
Handling Advice:	Avoid repeated freeze/thaw cycles.
Storage:	RT/-20 °C
Storage Comment:	Store at 4 °C for short term storage (1/2 weeks). Aliquot and store at -20 °C or -70 °C for long term storage.



#### SDS-PAGE

**Image 1.** Figure annotation denotes ug of protein loaded and % gel used.