

Datasheet for ABIN934886

GroES Protein[Go to Product page](#)**1** Image

Overview

Quantity:	100 µg
Target:	GroES
Origin:	E. coli
Source:	Escherichia coli (E. coli)
Protein Type:	Recombinant
Application:	SDS-PAGE (SDS)

Product Details

Sequence:	MNIRPLHDRV IVKRKEVETK SAGGIVLTGS AAKSTRGEV LAVGNRILE NGEVKPLDVK VGDIVIFNDG YGVKSEKIDN EEVLIMSESD ILAIVEA
Characteristics:	Purified recombinant E.coli GroES protein Expression System: E.coli Molecular weight on SDS-PAGE will appear higher.
Purity:	> 95 % pure

Target Details

Target:	GroES
Background:	GroES protein is the co-chaperonin of GroES in E. coli and assists protein folding. GroEL mediated folding requires the co-chaperonin GroES which is essential for viability. GroES is composed of a single heptameric ring of 10kDa subunits that binds to the ends of the GroEL cylinder. GroES gene was amplified by PCR from E. coli and cloned into an expression vector. This protein was overexpressed in E. coli and was purified by using conventional

Target Details

chromatography techniques.

Alternative Names: CPN10 protein, 10 kDa chaperonin protein, groS protein, 10 kDa heat shock protein mitochondrial protein, HSP 10 protein, HSP10 protein, , EPF protein, mopB protein, Heat shock 10kDa protein 1 chaperonin 10 protein, Heat shock 10kD protein 1 chaperonin 10 protein, GroES protein, HSPE 1 protein, HSPE1 protein, Cpn 10 protein, Chaperonin 10 protein, Heat shock 10kDa protein 1 protein, Early pregnancy factor protein

Molecular Weight: 10.4 kDa (97 AA)

Application Details

Application Notes: GroES protein has been used in SDS PAGE and may be suitable for use in other assays to be determined by the end user.

Restrictions: For Research Use only

Handling

Format: Liquid

Concentration: 1 mg/mL

Buffer: Supplied as a liquid in 25 mM Tris-HCl, pH7.5, containing 105 mM NaCl, 5 mM DTT, and 10 % glycerol.

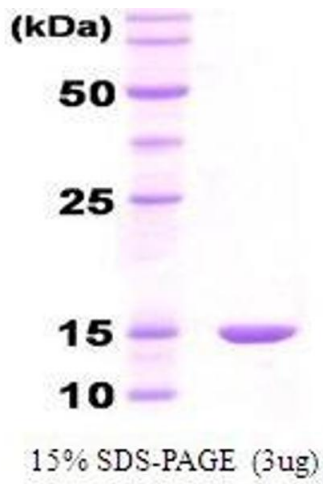
Preservative: Dithiothreitol (DTT)

Precaution of Use: This product contains Dithiothreitol: a POISONOUS AND HAZARDOUS SUBSTANCE, which should be handled by trained staff only.

Handling Advice: Avoid repeated freeze/thaw cycles.

Storage: RT/-20 °C

Storage Comment: Store at 4 °C for short term storage (1/2 weeks). Aliquot and store at -20 °C or -70 °C for long term storage.



SDS-PAGE

Image 1. Figure annotation denotes ug of protein loaded and % gel used.