

Datasheet for ABIN934925
Recoverin Protein (RCVRN)



[Go to Product page](#)

1 Image

Overview

Quantity:	100 µg
Target:	Recoverin (RCVRN)
Origin:	Human
Source:	Escherichia coli (E. coli)
Protein Type:	Recombinant
Application:	SDS-PAGE (SDS)

Product Details

Sequence: MGNSKSGALS KEILEELQLN TKFSEELCS WYQSFLKDCP TGRITQQFQ SIYAKFFPDT
DPKAYAQHVF RSFDSNLDGT LDFKEYVIAL HMTTAGKTNQ KLEWAFSLYD VDGNGTISKN
EVLEIVMAIF KMITPEDVKL LPDDENTPEK RAEKIWKYFG KNDDDKLTEK EFIEGTLANK
EILRLIQFEP QKVKEKMKNA

Characteristics: Purified recombinant Human Recoverin protein
Expression System: E.coli
Molecular weight on SDS-PAGE will appear higher.

Purity: > 95 % pure

Target Details

Target:	Recoverin (RCVRN)
Alternative Name:	Recoverin (RCVRN Products)
Background:	Recoverin is a heterogeneously acylated calcium-binding and intracellular signal transduction

Target Details

protein in the photoreceptor cells of retina. Recoverin contains four EF-hands, of which two bind Ca. Ca-induced extrusion of the acyl group from a hydrophobic cleft in the protein drives the translocation of recoverin from solution to the disc membrane. Recently, recoverin is a detectable serologic protein that is expressed in patients with cancer-associated retinopathy, a paraneoplastic syndrome. Recombinant human recoverin was overexpressed in *E. coli* and purified by using conventional chromatography techniques.

Alternative Names: Protein CAR protein, Cancer associated retinopathy protein protein, Cancer associated retinopathy protein antibody protein, RCVRN protein, , Recoverin protein, CAR protein protein, RCV1 protein, Cancer-associated retinopathy protein protein, Recoverin protein

Molecular Weight: 23 kDa (200 AA)

Pathways: [Regulation of G-Protein Coupled Receptor Protein Signaling](#), [Phototransduction](#)

Application Details

Application Notes: Recoverin protein has been used in SDS PAGE and may be suitable for use in other assays to be determined by the end user.

Restrictions: For Research Use only

Handling

Format: Liquid

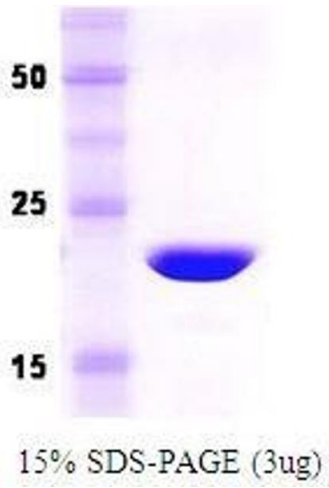
Concentration: 1 mg/mL

Buffer: Supplied as a liquid in 20 mM Tris, pH 8.0, containing 0 mM EDTA, 0 mM MgCl₂, and 10 % glycerol.

Handling Advice: Avoid repeated freeze/thaw cycles.

Storage: RT/-20 °C

Storage Comment: Store at 4 °C for short term storage (1/2 weeks). Aliquot and store at -20 °C or -70 °C for long term storage.



SDS-PAGE

Image 1. Figure annotation denotes ug of protein loaded and % gel used.