

Datasheet for ABIN934931

PSPH Protein (AA 1-382) (His tag)[Go to Product page](#)**1** Image

Overview

Quantity:	100 µg
Target:	PSPH
Protein Characteristics:	AA 1-382
Origin:	Human
Source:	Escherichia coli (E. coli)
Protein Type:	Recombinant
Purification tag / Conjugate:	This PSPH protein is labelled with His tag.
Application:	SDS-PAGE (SDS)

Product Details

Sequence:	MVSHSELRKL FYSADAVCFD VDSTVIREEG IDELAKICGV EDAVSEMTRR AMGGAVPFKA ALTERLALIQ PSREQVQRLL AEQPPHLTPG IRELVSRLLQE RNVQVFLISG GFRSIVEHVA SKLNIPATNV FANRLKIFYFN GEYAGFDETQ PTAESGGKGGK VIKLLKEKFH FKKIIMIGDG ATDMEACPPA DAFIGFGGNV IRQQVKDNAK WYITDFVELL GELEE
Characteristics:	Purified recombinant Human Phosphoserine phosphatase protein Expression System: E.coli Molecular weight on SDS-PAGE will appear higher.
Purity:	> 95 % pure
Endotoxin Level:	< 1.0 EU per µg of protein (determined by LAL method)

Target Details

Target:	PSPH
Alternative Name:	Phosphoserine phosphatase (PSPH Products)
Background:	<p>Protein phosphatase 2C (PP2Cα) is a Mn²⁺- or Mg²⁺-dependent protein serine/threonine phosphatase that is essential for regulating cellular stress response in eukaryotes. The protein coding region of PP2Cα(AA 1-382) was cloned into an E. coli expression vector. PP2Cα was overexpressed in E. coli as a soluble His-tag fusion protein, and it was purified by conventional column chromatographic techniques.</p> <p>Alternative Names: EC 3.1.3.3 protein, PSPase protein, PSP protein, L 3 phosphoserine phosphatase protein, , Phosphoserine phosphatase deficiency protein, included protein, Phosphoserine phosphatase Human protein, L-3-phosphoserine phosphatase protein, Phosphoserine phosphatase protein, O phosphoserine phosphohydrolase protein, O-phosphoserine phosphohydrolase protein, PSPH protein</p>
Molecular Weight:	25 kDa (225 AA)
Pathways:	Warburg Effect

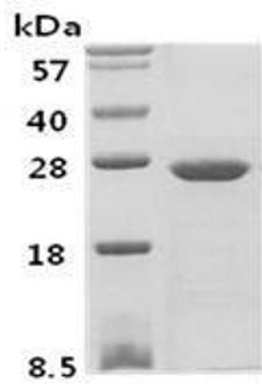
Application Details

Application Notes:	Phosphoserine phosphatase protein has been used in SDS PAGE and may be suitable for use in other assays to be determined by the end user.
Restrictions:	For Research Use only

Handling

Format:	Liquid
Concentration:	1 mg/mL
Buffer:	Supplied as a liquid in 10 mM Tris-HCl, pH 7.5, containing 50 mM NaCl, 0 mM DTT, 0 mM MnCl, and 20 % glycerol.
Preservative:	Dithiothreitol (DTT)
Precaution of Use:	This product contains Dithiothreitol: a POISONOUS AND HAZARDOUS SUBSTANCE, which should be handled by trained staff only.
Handling Advice:	Avoid repeated freeze/thaw cycles.
Storage:	RT/-20 °C
Storage Comment:	Store at 4 °C for short term storage (1/2 weeks). Aliquot and store at -20 °C or -70 °C for long

term storage.



14% SDS-PAGE (3ug)

SDS-PAGE

Image 1. Figure annotation denotes ug of protein loaded and % gel used.