

Datasheet for ABIN934938

**IgG2b Protein (AA 502-636, Fasciclin Domain 4)**[Go to Product page](#)**1** Image

## Overview

Quantity:	100 µg
Target:	IgG2b
Protein Characteristics:	Fasciclin Domain 4, AA 502-636
Origin:	Human
Source:	Escherichia coli (E. coli)
Protein Type:	Recombinant
Application:	SDS-PAGE (SDS)

## Product Details

Sequence:	MGTVM DV LKG DNRFSMLVAA IQSAGLTETL NREGVYTVFA PTNEAFRALP PRERSRL LGD AKELANILKY HIGDEILVSG GIGALVRLKS LQGDKLEVSL KNNVSVNKE PVAEPDIMAT NGVHVITNV LQPPA
Characteristics:	Purified recombinant Human BIGH3 protein Expression System: E.coli Molecular weight on SDS-PAGE will appear higher.
Purity:	> 95 % pure

## Target Details

Target:	IgG2b
Alternative Name:	IGH3 ( <a href="#">IgG2b Products</a> )
Target Type:	Antibody

## Target Details

---

Background:	<p>BIGH3, also known as TGFBI and betaig-h3, is an extracellular matrix protein induced by transforming growth factor(TGF)-beta 1. BIGH3 protein is involved in cell growth, cell differentiation, wound healing and cell adhesion. In addition, some missense mutations of BIGH3 were identified in families affected with human autosomal dominant corneal dystrophies. BIGH3 gene encodes for a 683 amino-acid protein containing an RGD motif and four internal repeated domains which have highly conserved sequences founded in several species (Fasciclin domain). Recombinant human BIGH3 protein was expressed in E. coli and purified by using conventional chromatography techniques.</p> <p>Alternative Names: CSD1 protein, beta induced protein, Beta ig h3 protein, CDB1 protein, TGFBI protein, BIGH -3 protein, CSD protein, A1747162 protein, LCD1 protein, Fasciclin domain 4 protein, RGD CAP protein, BIGH3 protein, RGD-CAP protein, BIGH3, EBMD protein, CSD2 protein, CSD3 protein, A1181842 protein, TGFBI transforming growth factor protein, RGD containing collagen associated protein protein, BIGH -3, Kerato epithelin protein, CDG2 protein, Beta ig-h3 protein, big h3 protein, CDGG1 protein, Beta ig protein, BIGH 3, Transforming growth factor-beta-induced protein ig-h3 protein, MGC150270 protein, Transforming growth factor beta induced protein ig h3., RGD-containing collagen-associated protein protein, Kerato-epithelin protein, BIGH 3 protein, 68kDa protein, BIGH3 protein</p>
-------------	---

Molecular Weight:	14.5 kDa (135 AA)
-------------------	-------------------

## Application Details

---

Application Notes:	BIGH3 protein has been used in SDS PAGE and may be suitable for use in other assays to be determined by the end user.
--------------------	---

Restrictions:	For Research Use only
---------------	-----------------------

## Handling

---

Format:	Liquid
---------	--------

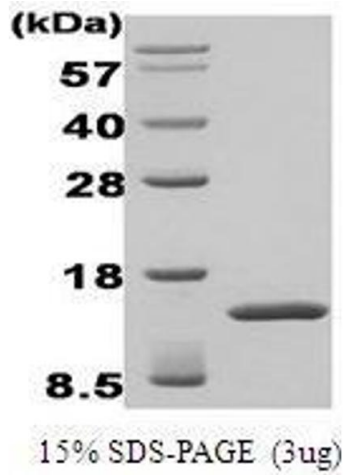
Concentration:	1 mg/mL
----------------	---------

Buffer:	Supplied as a liquid in 20 mM Tris, pH 8.0.
---------	---

Handling Advice:	Avoid repeated freeze/thaw cycles.
------------------	------------------------------------

Storage:	RT/-20 °C
----------	-----------

Storage Comment:	Store at 4 °C for short term storage (1/2 weeks). Aliquot and store at -20 °C or -70 °C for long term storage.
------------------	--



#### SDS-PAGE

**Image 1.** Figure annotation denotes ug of protein loaded and % gel used.