

Datasheet for ABIN934949
YWHAE Protein (AA 1-255)



[Go to Product page](#)

1 Image

Overview

Quantity:	100 µg
Target:	YWHAE
Protein Characteristics:	AA 1-255
Origin:	Human
Source:	Escherichia coli (E. coli)
Protein Type:	Recombinant
Application:	SDS-PAGE (SDS)

Product Details

Sequence: MDDREDLVYQ AKLAEQAERY DEMVESMKKV AGMDVELTVE ERNLLSVAYK NVIGARRASW
RIISSIEQKE ENKGGEDKLK MIREYRQMVE TELKLICCDI LDVLDKHLIP AANTGESKVF
YYKMKGDYHR YLAEFATGND RKEAAENSLV AYKAASDIAM TELPPTHPIR LGLALNFSVF
YYEILNSPDR ACRLAKAAFD DAIAELDTLS EESYKDSTLI MQLLRDNLTL WTSDMQGDGE
EQNKEALQDV EDENQ

Characteristics: Purified recombinant Human 14.3.3 epsilon protein
Expression System: E.coli
Molecular weight on SDS-PAGE will appear higher.

Purity: > 95 % pure

Target Details

Target: YWHAE

Target Details

Alternative Name: 14.3.3 epsilon ([YWHAE Products](#))

Background: The 14-3-3 family of proteins plays a key regulatory role in signal transduction, checkpoint control, apoptotic and nutrient-sensing pathways. 14-3-3 proteins are highly conserved and ubiquitously expressed. There are at least seven isoforms, beta, gamma, epsilon, sigma, zeta, tau and eta that have been identified in mammals. The 14-3-3 epsilon, a subtype of the 14-3-3 family of proteins, was thought to be brain and neuron-specific. It has been shown to interact with CDC25 phosphatases, RAF1 and IRS1 proteins, suggesting its role in diverse biochemical activities related to signal transduction, such as cell division and regulation of insulin sensitivity. It has also been implicated in the pathogenesis of small cell lung cancer. Recombinant human 14-3-3 epsilon was expressed in *E. coli* and purified by using conventional chromatography techniques.

Alternative Names: FLJ45465 protein, epsilon polypeptide 14 3 3 E protein, 14/3/3 epsilon protein, Tyrosine 3/tryptophan 5 monooxygenase activation protein epsilon polypeptide., MDCR protein, 14 3 3E protein, KCIP1 protein, YWHAE protein, MDS protein, 14.3.3 epsilon, Tyrosine 3-monooxygenase/ tryptophan 5-monooxygenase activation protein protein, 14-3-3 epsilon protein, 14-3-3 epsilon protein, epsilon polypeptide protein, 14/3/3 epsilon, 14-3-3 epsilon, Protein kinase C inhibitor protein1 protein, Mitochondrial import stimulation factor L subunit protein, Tyrosine 3/tryptophan 5 -monooxygenase activation protein protein, KCIP-1 protein, KCIP 1 protein

Molecular Weight: 29 kDa (255 AA)

Pathways: [Neurotrophin Signaling Pathway](#), [Myometrial Relaxation and Contraction](#), [M Phase](#)

Application Details

Application Notes: 14.3.3 epsilon protein has been used in SDS PAGE and may be suitable for use in other assays to be determined by the end user.

Restrictions: For Research Use only

Handling

Format: Liquid

Concentration: 1 mg/mL

Buffer: Supplied as a liquid in 20 mM Tris, pH 7.5.

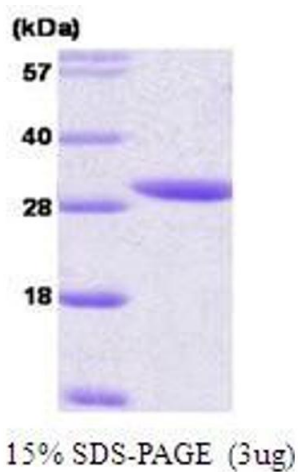
Handling Advice: Avoid repeated freeze/thaw cycles.

Handling

Storage: RT/-20 °C

Storage Comment: Store at 4 °C for short term storage (1/2 weeks). Aliquot and store at -20 °C or -70 °C for long term storage.

Images



SDS-PAGE

Image 1. Figure annotation denotes ug of protein loaded and % gel used.