

Datasheet for ABIN934950

14-3-3 theta Protein (YWHAQ) (AA 1-245)[Go to Product page](#)**1** Image

Overview

Quantity:	100 µg
Target:	14-3-3 theta (YWHAQ)
Protein Characteristics:	AA 1-245
Origin:	Human
Source:	Escherichia coli (E. coli)
Protein Type:	Recombinant
Application:	SDS-PAGE (SDS)

Product Details

Sequence:	MEKTELIQKA KLAEQAERYD DMATCMKAVT EQGAELSNEE RNLLSVAYKN VVGGRRSAWR VISSIEQKTD TSDKKLQLIK DYREKVESEL RSICTTVLEL LDKYLIANAT NPESKVFYLK MKGDYFRYLA EVACGDDRKQ TIDNSQGAYQ EAFDISKKEM QPTHPIRLGL ALNFSVFYEE ILNNPELACT LAKTAFDEAI AELDTLNEDS YKDSTLIMQL LRDNLTLWTS DSAGEECDAA EGAEN
Characteristics:	Purified recombinant Human 14.3.3 tau protein Expression System: E.coli Molecular weight on SDS-PAGE will appear higher.
Purity:	> 95 % pure
Endotoxin Level:	< 1.0 EU per µg of protein (determined by LAL method)

Target Details

Target:	14-3-3 theta (YWHAQ)
---------	----------------------

Target Details

Alternative Name: 14.3.3 tau ([YWHAQ Products](#))

Background: The 14-3-3 family of proteins plays a key regulatory role in signal transduction, checkpoint control, apoptotic and nutrient-sensing pathways. 14-3-3 proteins are highly conserved and ubiquitously expressed. There are at least seven isoforms, beta, gamma, epsilon, sigma, zeta, tau and eta that have been identified in mammals. The 14-3-3 tau, a subtype of the 14-3-3 family of proteins, was found in T Cells, brain and testes. This 14-3-3 tau is upregulated in patients with amyotrophic lateral sclerosis. Recombinant human YWHAQ was expressed in E. coli and purified by using conventional chromatography techniques.

Alternative Names: theta polypeptide., 14-3-3 tau protein, theta protein, 14 3 3 protein theta protein, theta polypeptide protein, 14/3/3 tau, 14 3 3 tau protein, 14/3/3 tau protein, 1C5 protein, 14-3-3 tau, 14-3-3 tau protein, Tyrosine 3/tryptophan 5 -monooxygenase activation protein protein, Protein HS1 protein, KCIP1 protein, 14 3 3 protein tau protein, YWHAQ protein, 14.3.3 tau, tyr3/trp5 monooxygenase activation protein protein, Protein kinase C inhibitor protein 1 protein, theta polypeptide 14 3 3 protein T cell protein, 14 3 3 theta protein, Tyrosine 3 monooxygenase/tryptophan 5 monooxygenase activation protein protein, HS1 protein, tyrosine 3-monooxygenase/ tryptophan 5-monooxygenase activation protein protein

Molecular Weight: 27 kDa (245 AA)

Pathways: [Apoptosis](#), [Myometrial Relaxation and Contraction](#)

Application Details

Application Notes: 14.3.3 protein has been used in SDS PAGE and may be suitable for use in other assays to be determined by the end user.

Restrictions: For Research Use only

Handling

Format: Liquid

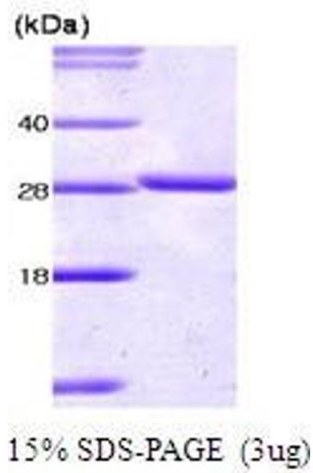
Concentration: 1 mg/mL

Buffer: Supplied as a liquid in 20 mM Tris, pH 7.5.

Handling Advice: Avoid repeated freeze/thaw cycles.

Storage: RT/-20 °C

Storage Comment: Store at 4 °C for short term storage (1/2 weeks). Aliquot and store at -20 °C or -70 °C for long term storage.



SDS-PAGE

Image 1. Figure annotation denotes ug of protein loaded and % gel used.