



[Go to Product page](#)

Datasheet for ABIN934955

## Interleukin 1, beta (IL1B) (AA 117-269) Peptide

1 Image

1 Publication

### Overview

Quantity:	100 µg
Target:	IL-1 beta (IL1B)
Protein Region:	AA 117-269
Origin:	Human
Source:	Escherichia coli (E. coli)
Peptide Type:	Recombinant
Application:	SDS-PAGE (SDS)

### Product Details

Sequence:	MAPVRS LNCT LRDSQQKSLV MSGPYELKAL HLQGQDMEQQ VVFSMSFVQG EESNDKIPVA LGLKEKNLYL SCVLKDDKPT LQLESVDPKN YPKKKMEKRF VFNKIEINN K LEFESAQFPN WYISTSQAEN MPVFLGGTKG GQDITDFTMQ FVSS
Characteristics:	Purified recombinant Human IL1 beta protein Expression System: E.coli Molecular weight on SDS-PAGE will appear higher.
Purity:	> 95 % pure
Endotoxin Level:	< 1.0 EU per µg of protein (determined by LAL method)

### Target Details

Target:	IL-1 beta (IL1B)
Background:	Interleukin-1 (IL-1) has been considered a potentially important inflammatory mediator. It is

## Target Details

---

composed of two distinct proteins, called as IL-1 alpha and IL-1 beta. IL-1 beta is a proinflammatory cytokine produced in a variety of cells including monocytes, tissue macrophages, keratinocytes and other epithelial cells. Both IL-1 alpha and IL-1 beta bind to the same receptor and they are structurally related polypeptides that share approximately 20 % amino acid. Recombinant human IL-1 beta was expressed in E. coli and purified by using conventional chromatography techniques.

Alternative Names: IL beta 1 protein, IL1-beta protein, IL1B protein, Interleukin 1b protein, IL beta 1, IL-1B, Interleukin 1beta protein, IL1F2 protein, beta proprotein protein, IL-1 protein, IL beta-1, IL1 beta, interleukin 1 beta protein, Interleukin 1 protein, IL beta-1 protein

---

Molecular Weight: 17 kDa (154 AA)

## Application Details

---

Application Notes: IL1 beta protein has been used in SDS PAGE and may be suitable for use in other assays to be determined by the end user.

---

Restrictions: For Research Use only

## Handling

---

Format: Liquid

---

Concentration: 1 mg/mL

---

Buffer: Supplied as a liquid in PBS, pH 7.4.

---

Handling Advice: Avoid repeated freeze/thaw cycles.

---

Storage: RT/-20 °C

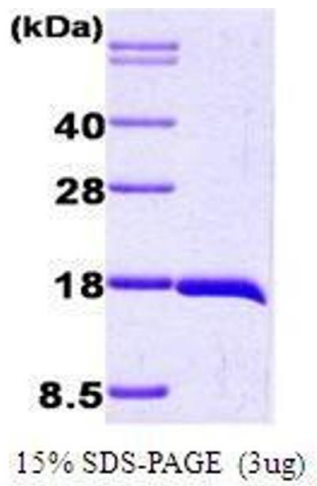
---

Storage Comment: Store at 4 °C for short term storage (1/2 weeks). Aliquot and store at -20 °C or -70 °C for long term storage.

## Publications

---

Product cited in: Spatz, Eibl, Hink, Wolf, Fischer, Mayr, Schernthaner, Eibl: "Impaired primary immune response in type-1 diabetes. Functional impairment at the level of APCs and T-cells." in: **Cellular immunology**, Vol. 221, Issue 1, pp. 15-26, (2003) ([PubMed](#)).



#### SDS-PAGE

**Image 1.** Figure annotation denotes ug of protein loaded and % gel used.