

Datasheet for ABIN934956
RAB5 Protein (AA 1-215)



[Go to Product page](#)

1 Image

Overview

Quantity:	100 µg
Target:	RAB5 (RAB5A)
Protein Characteristics:	AA 1-215
Origin:	Human
Source:	Escherichia coli (E. coli)
Protein Type:	Recombinant
Application:	SDS-PAGE (SDS)

Product Details

Sequence:	MASRGATRPN GPNTGNKICQ FKLVLGESA VGKSSLVLRV VKGQFHEFQE STIGAAFLTQ TVCLDDTTVK FEIWDTAGQE RYHSLAPMYR RGAQAAIVVY DITNEESFAR AKNWVKELQR QASPNIVIAL SGNKADLANK RAVDFQEAQS YADDNSLLFM ETSAKTSMNV NEIFMAIAKK LPKNEPQNPG ANSARGRGVD LTEPTQPTRN QCCSN
Characteristics:	Purified recombinant Human RAB5 A protein Expression System: E.coli Molecular weight on SDS-PAGE will appear higher.
Purity:	> 95 % pure
Endotoxin Level:	< 1.0 EU per µg of protein (determined by LAL method)

Target Details

Target:	RAB5 (RAB5A)
---------	--------------

Target Details

Alternative Name: RAB5A ([RAB5A Products](#))

Background: Rab5a is a member of RAS oncogene family. The small GTPase, Rab5a is a crucial regulatory component of the endocytic pathway. Activation of Rab5a is mediated by GDP-GTP exchange factors (GEFs) that generate the Rab5-GTP complex. Recombinant human Rab5a was expressed in E. coli and purified by using conventional chromatography techniques.

Alternative Names: RABA-5 protein, RAB5A protein, RAB5 protein, RABA-5, member RAS oncogene family protein, RAB5A, RAB5A member RAS oncogene family protein, RABA 5, RABA 5 protein, RAS associated protein RAB5A protein, member RAS oncogene family RAB 5 protein, Ras related protein Rab 5A., RAB5A protein, Rab5a protein, RAB 5A protein

Molecular Weight: 23 kDa (215 AA)

Pathways: [Smooth Muscle Cell Migration](#), [Regulation of long-term Neuronal Synaptic Plasticity](#)

Application Details

Application Notes: RAB5A protein has been used in SDS PAGE and may be suitable for use in other assays to be determined by the end user.

Restrictions: For Research Use only

Handling

Format: Liquid

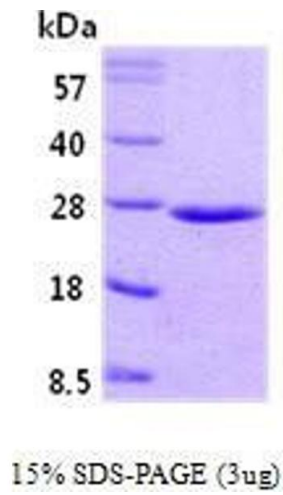
Concentration: 1 mg/mL

Buffer: Supplied as a liquid in 20 mM Tris, pH 8.0.

Handling Advice: Avoid repeated freeze/thaw cycles.

Storage: RT/-20 °C

Storage Comment: Store at 4 °C for short term storage (1/2 weeks). Aliquot and store at -20 °C or -70 °C for long term storage.



SDS-PAGE

Image 1. Figure annotation denotes ug of protein loaded and % gel used.