

Datasheet for ABIN934966  
**GST Protein (AA 1-224)**



[Go to Product page](#)

1 Image

## Overview

Quantity:	100 µg
Target:	GST
Protein Characteristics:	AA 1-224
Origin:	Schistosoma japonicum
Source:	Escherichia coli (E. coli)
Protein Type:	Recombinant
Application:	SDS-PAGE (SDS)

## Product Details

Sequence:	MSPILGYWKI KGLVQPTRL L LEYLEEKYEE HLYERDEGDK WRNKKFELGL EFPNLPYYID GDVKLTQSMA IIRYIADKHN MLGGCPKERA EISMLEGAVL DIRYGVSRIA YSKDFETLKV DFLSKLPEML KMFEDRLCHK TYLNGDHVTH PDFMLYDALD VVLYMDPMCL DAFPKLVCFK KRIEAIQID KYLKSSKYIA WPLQGWQATF GGDHPPKSD LVPR
Characteristics:	Purified recombinant Schistosoma japonicum GST protein Expression System: E.coli Molecular weight on SDS-PAGE will appear higher.
Purity:	> 95 % pure

## Target Details

Target:	GST
Alternative Name:	GST ( <a href="#">GST Products</a> )

## Target Details

---

**Background:** Glutathione S-transferase (GST) represents a major group of detoxification enzymes. This enzyme acts by catalyzing the reaction of glutathione with an acceptor molecule to form an S-substituted glutathione (S=sulfur). The reactions utilizing glutathione contribute the transformation of a wide range of compounds, including carcinogens, therapeutic drugs, and products of oxidative stress. As well as its enzymatic activities, GST may also bind toxins and function as transport protein. Because of this, an early term for GSTs was ligandin. Glutathione S-transferase was originally separated from *Schistosoma japonicum* but currently isolated from recombinant *E. coli* source. Recombinant GST was expressed in *E. coli* and purified by conventional chromatography techniques.

Alternative Names: SjGST, GST protein, GST 26 protein, Glutathione S-Transferase protein, Sj26 protein protein

**Molecular Weight:** 26 kDa (224 AA)

## Application Details

---

**Application Notes:** GST protein has been used in SDS PAGE and may be suitable for use in other assays to be determined by the end user.

**Restrictions:** For Research Use only

## Handling

---

**Format:** Liquid

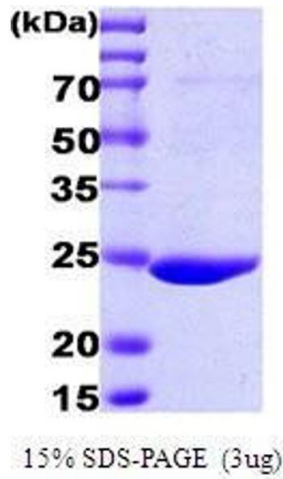
**Concentration:** 1 mg/mL

**Buffer:** Supplied as a liquid in PBS, pH 7.4.

**Handling Advice:** Avoid repeated freeze/thaw cycles.

**Storage:** RT/-20 °C

**Storage Comment:** Store at 4 °C for short term storage (1/2 weeks). Aliquot and store at -20 °C or -70 °C for long term storage.



#### SDS-PAGE

**Image 1.** Figure annotation denotes ug of protein loaded and % gel used.