

Datasheet for ABIN934969  
**YWHAB Protein (AA 1-246)**



[Go to Product page](#)

1 Image

## Overview

Quantity:	100 µg
Target:	YWHAB
Protein Characteristics:	AA 1-246
Origin:	Human
Source:	Escherichia coli (E. coli)
Protein Type:	Recombinant
Application:	SDS-PAGE (SDS)

## Product Details

Sequence:	MTMDKSELVQ KAKLAEQAER YDDMAAAMKA VTEQGHESLN EERNLLSVAY KNVVGARRSS WRVISSIEQK TERNEKKQQM GKEYREKIEA ELQDICNDVL ELLDKYLIPN ATQPESKVFY LKMKGDYFRY LSEVASGDNK QTTVSNSQQA YQEAFEISKK EMQPTHPIRL GLALNFSVFY YEILNSPEKA CSLAKTAFDE AIAELDTLNE ESYKDSTLIM QLLRDNLTLW TSENQGDEGD AGEGEN
Characteristics:	Purified recombinant Human 14.3.3 beta protein Expression System: E.coli Molecular weight on SDS-PAGE will appear higher.
Purity:	> 90 % pure

## Target Details

Target:	YWHAB
Abstract:	<a href="#">YWHAB Products</a>

## Target Details

---

**Background:** The 14-3-3 family plays a key regulatory role in signal transduction, checkpoint control, apoptotic and nutrient-sensing pathways. 14-3-3 proteins are highly conserved and ubiquitously expressed. There are at least seven isoforms, beta, gamma, epsilon, sigma, zeta, tau and eta that have been identified in mammals. The 14-3-3 beta, a subtype of the 14-3-3 proteins, was found in B Cells, brain and liver etc. This 14-3-3 beta has been shown to interact with RAF1 and CDC25 phosphatases, suggesting that it may play a role in linking mitogenic signaling and the cell cycle machinery. Recombinant human 14-3-3 beta was expressed in E. coli and purified by using conventional chromatography techniques.

Alternative Names: Protein kinase C inhibitor protein 1 protein, Tyrosine 3

Monooxygenase/Tryptophan 5 Monooxygenase Activation Protein Beta Polypeptide., Brain protein 14 3 3 beta isoform protein, HS1 protein, 14-3-3 beta, 14-3-3 beta protein, beta polypeptide protein, KCIP-1 protein, GW 128 protein, Protein 1054 protein, YWHAB protein, 14.3.3 beta, HS 1 protein, 14/3/3 beta protein, beta polypeptide 14 3 3 protein beta/alpha protein, GW128 protein, 14-3-3 beta protein, KCIP 1 protein, Tyrosine 3-monooxygenase/tryptophan 5-monooxygenase activation protein protein, Tyrosine 3-monooxygenase/tryptophan 5-monooxygenase activation protein protein, KCIP1 protein, 14/3/3 beta

---

**Molecular Weight:** 28 kDa (246 AA)

**Pathways:** [Fc-epsilon Receptor Signaling Pathway](#), [EGFR Signaling Pathway](#), [Neurotrophin Signaling Pathway](#), [Myometrial Relaxation and Contraction](#), [Maintenance of Protein Location](#)

## Application Details

---

**Application Notes:** 14.3.3 beta protein has been used in SDS PAGE and may be suitable for use in other assays to be determined by the end user.

**Restrictions:** For Research Use only

## Handling

---

**Format:** Liquid

**Concentration:** 1 mg/mL

**Buffer:** Supplied as a liquid in 20 mM Tris, pH 8.0, containing 0 mM EDTA, and 50 mM NaCl.

**Handling Advice:** Avoid repeated freeze/thaw cycles.

**Storage:** RT/-20 °C

---

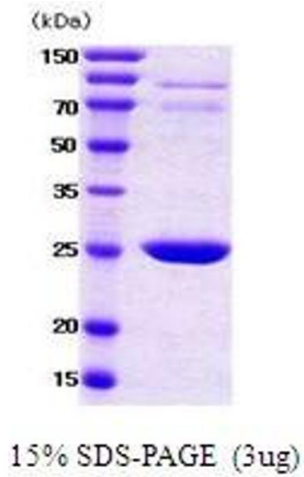
## Handling

---

Storage Comment: Store at 4 °C for short term storage (1/2 weeks). Aliquot and store at -20 °C or -70 °C for long term storage.

## Images

---



### SDS-PAGE

**Image 1.** Figure annotation denotes ug of protein loaded and % gel used.