

Datasheet for ABIN934978
SNAP25 Protein (AA 1-206)



[Go to Product page](#)

1 Image

Overview

Quantity:	100 µg
Target:	SNAP25
Protein Characteristics:	AA 1-206
Origin:	Human
Source:	Escherichia coli (E. coli)
Protein Type:	Recombinant
Application:	SDS-PAGE (SDS)

Product Details

Sequence:	MAEDADMRNE LEEMQRRADQ LADESLESTR RMLQLVEESK DAGIRTLVML DEQGEQLERI EEGMDQINKD MKEAEKNLTD LGKFCGLCVC PCNKLKSSDA YKKA WGNNQD GVVASQPARV VDEREQMAIS GGFIRRV TND ARENEMDENL EQVSGIIGNL RHMALDMGNE IDTQNRQIDR IMEKADSNKT RIDEANQRAT KMLGSG
Characteristics:	Purified recombinant Human SNAP25 protein Expression System: E.coli Molecular weight on SDS-PAGE will appear higher.
Purity:	> 90 % pure

Target Details

Target:	SNAP25
Alternative Name:	SNAP25 (SNAP25 Products)

Target Details

Background: The synaptosomal-associated protein (SNAP-25) is an essential component of the core complex that mediates presynaptic vesicle trafficking. Thus, SNAP-25 is directly involved in the release of neurotransmitters and this protein exists as two alternative isoforms, SNAP25A and SNAP25B which differ by 9 amino acids in central portion of these proteins. Recombinant SNAP25B protein was expressed in E. coli and purified by using conventional chromatography techniques.

Alternative Names: MGC139754 protein, SNP 25 protein, SNAP25, SNAP-25 protein, Super protein protein, FLJ23079 protein, SNAP protein, Synaptosomal associated protein protein, MGC105414 protein, RIC-4 protein, Synaptosomal-associated protein 25 isoform SNAP25B protein, SNAP25 protein, SNAP-25B protein, SNAP-25, Synaptosomal associated protein 25kDa., Synaptosomal associated protein 25 protein, SNAP 25 protein, SNAP 25, RIC4 protein, SNP25 protein, HGNC:11132 protein, dJ1068F16.2 protein, Resistance to inhibitors of cholinesterase 4 homolog protein, RIC 4 protein, SNAP-25 protein, bA416N4.2 protein, Synaptosomal-associated protein 25 isoform SNAP25B SUP protein, SEC9 protein, Bdr protein, Synaptosomal associated 25 kDa protein protein, sp protein, SEC9 protein, SNAP 25 protein

Molecular Weight: 23 kDa (206 AA)

Pathways: [Positive Regulation of Peptide Hormone Secretion](#), [Hormone Transport](#), [Synaptic Vesicle Exocytosis](#), [Dicarboxylic Acid Transport](#)

Application Details

Application Notes: SNAP25 protein has been used in SDS PAGE and may be suitable for use in other assays to be determined by the end user.

Restrictions: For Research Use only

Handling

Format: Liquid

Concentration: 1 mg/mL

Buffer: Supplied as a liquid in 25 mM Tris, pH 7.5, containing 5 mM DTT, 5 mM EDTA, and 10 % glycerol.

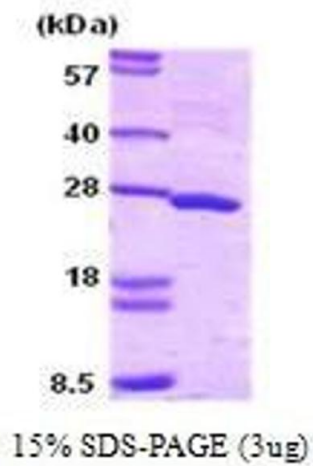
Preservative: Dithiothreitol (DTT)

Precaution of Use: This product contains Dithiothreitol: a POISONOUS AND HAZARDOUS SUBSTANCE, which should be handled by trained staff only.

Handling

Handling Advice:	Avoid repeated freeze/thaw cycles.
Storage:	RT/-20 °C
Storage Comment:	Store at 4 °C for short term storage (1/2 weeks). Aliquot and store at -20 °C or -70 °C for long term storage.

Images



SDS-PAGE

Image 1. Figure annotation denotes ug of protein loaded and % gel used.