

Datasheet for ABIN934981  
**CRYAB Protein (AA 1-175)**



[Go to Product page](#)

1 Image

## Overview

Quantity:	100 µg
Target:	CRYAB
Protein Characteristics:	AA 1-175
Origin:	Mouse
Source:	Escherichia coli (E. coli)
Protein Type:	Recombinant
Application:	SDS-PAGE (SDS)

## Product Details

Sequence:	MDIAIHHPWI RRPFFPFHSP SRLFDQFFGE HLLSDLFST ATSLSPFYLR PPSFLRAPSW IDTGLSEMRL EKDRFSVNLD VKHFSPEELK VKVLGDVIEV HGKHEERQDE HGFISREFHR KYRIPADVDP LTITSSLSSD GVLTVNGPRK QVSGPERTIP ITREEKPAVA AAPKK
Characteristics:	Purified recombinant Mouse Crystallin alpha B protein Expression System: E.coli Molecular weight on SDS-PAGE will appear higher.
Purity:	> 95 % pure

## Target Details

Target:	CRYAB
Alternative Name:	Crystallin alpha B ( <a href="#">CRYAB Products</a> )
Background:	Alpha crystallins are composed of two gene products, alpha-A and alpha-B for acidic and basic,

## Target Details

---

respectively. Alpha crystallins can be induced by heat shock and are members of the small heat shock protein (sHSP also known as the HSP20). They act as molecular chaperones and hold them in large soluble aggregates. These heterogeneous aggregates consist of 30-40 subunits, the alpha-A and alpha-B subunits have a 3:1 ratio, respectively. Two additional functions of alpha-crystallins are an autokinase activity and participation in the intracellular architecture. CRYAB is expressed widely in many tissues and organs. Recombinant CRYAB was expressed in E. coli and purified by using conventional chromatography techniques.

Alternative Names: Cryab protein, Crya-2 protein, Crya2 protein, , Crystallin alpha B protein

---

Molecular Weight: 20 kDa (175 AA)

## Application Details

---

Application Notes: Crystallin alpha B protein has been used in SDS PAGE and may be suitable for use in other assays to be determined by the end user.

---

Restrictions: For Research Use only

## Handling

---

Format: Liquid

---

Concentration: 1 mg/mL

---

Buffer: Supplied as a liquid in 20 mM Tris, pH 8.0, containing 10 % glycerol.

---

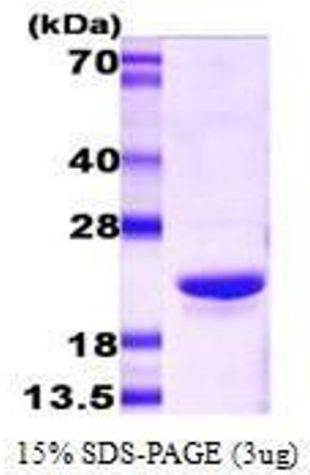
Handling Advice: Avoid repeated freeze/thaw cycles.

---

Storage: RT/-20 °C

---

Storage Comment: Store at 4 °C for short term storage (1/2 weeks). Aliquot and store at -20 °C or -70 °C for long term storage.



#### SDS-PAGE

**Image 1.** Figure annotation denotes ug of protein loaded and % gel used.