

Datasheet for ABIN934986
FABP6 Protein (AA 1-128)



[Go to Product page](#)

1 Image

Overview

Quantity:	100 µg
Target:	FABP6
Protein Characteristics:	AA 1-128
Origin:	Human
Source:	Escherichia coli (E. coli)
Protein Type:	Recombinant
Application:	SDS-PAGE (SDS)

Product Details

Sequence:	MAFTGKFEME SEKNYDEFMK LLGISSDVIE KAHNFKIVTE VQQDQGQFTW SQHYGGHTM TNKFTVGKES NIQTMGGKTF KATVQMEGGK LVVNFPNYHQ TSEIVGDKLV EVSTIGGVTY ERVSKRLA
Characteristics:	Purified recombinant Human FABP6 protein (isoform 2) Expression System: E.coli Molecular weight on SDS-PAGE will appear higher.
Purity:	> 95 % pure

Target Details

Target:	FABP6
Alternative Name:	FABP6 (FABP6 Products)
Background:	FABP-6 is a cytosolic protein that binds bile acids with a high affinity. In the small intestine, its

Target Details

expression is restricted to the ileum where it is involved in the enterohepatic circulation of bile acids. Alternate transcription promoters generate two transcript variants, encoding a 128 aa and a 177 aa residue protein. Human FABP6 isoform 2 contains 128 amino acid residues and is believed to be acetylated on Ala2. It binds both fatty acids and bile acids and has roles in fatty acid transport and metabolism. Recombinant human FABP-6 was expressed in E. coli and purified by using conventional chromatography techniques.

Alternative Names: I-BALB protein, ILBP protein, Intestinal bile acid binding protein., I 15P protein, Fatty acid binding protein 6 protein, I BAP protein, FABP-6, ileal (gastrotropin) protein, Fatty acid binding protein 6 Fatty acid binding protein 6 protein, I-BABP protein, I-BAP protein, ILLBP protein, I BALB protein, FABP-6 protein, I BABP protein, Ileal lipid binding protein protein, GT protein, ILBP3 protein, IBABP protein, IBAP protein, IBALB protein, ILBP protein, FABP6 protein, FABP6, I-15P protein, FABP 6, I15P protein, FABP 6 protein, Intestinal 15 kDa protein protein, Gastrotropin protein

Molecular Weight: 14 kDa (128 AA)

Application Details

Application Notes: FABP6 protein has been used in SDS PAGE and may be suitable for use in other assays to be determined by the end user.

Restrictions: For Research Use only

Handling

Format: Liquid

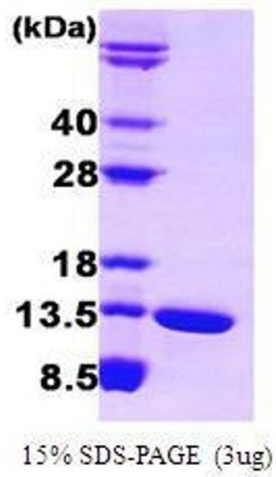
Concentration: 1 mg/mL

Buffer: Supplied as a liquid in PBS, pH 7.4, containing 10 % glycerol.

Handling Advice: Avoid repeated freeze/thaw cycles.

Storage: RT/-20 °C

Storage Comment: Store at 4 °C for short term storage (1/2 weeks). Aliquot and store at -20 °C or -70 °C for long term storage.



SDS-PAGE

Image 1. Figure annotation denotes ug of protein loaded and % gel used.