

Datasheet for ABIN934993  
**KISS1 Protein (AA 1-120)**



[Go to Product page](#)

1 Image

## Overview

|                          |                            |
|--------------------------|----------------------------|
| Quantity:                | 100 µg                     |
| Target:                  | KISS1                      |
| Protein Characteristics: | AA 1-120                   |
| Origin:                  | Human                      |
| Source:                  | Escherichia coli (E. coli) |
| Protein Type:            | Recombinant                |
| Application:             | SDS-PAGE (SDS)             |

## Product Details

|                  |   |
|------------------|---|
| Sequence:        | MEPLEKVASV GNSRPTGQQL ESLGLLAPGE QSLPCTERKP AATARLSRRG TSLSPPPSS<br>GSPQQPGLSA PHSRQIPAPQ GAVLVQREKD LPNYNWNNSFG LRF GKREAAP GNHGRSAGRG |
| Characteristics: | Purified recombinant Human KISS1 protein<br>Expression System: E.coli<br>Molecular weight on SDS-PAGE will appear higher.               |
| Purity:          | > 90 % pure   |

## Target Details

|                   |  |
|-------------------|--|
| Target:           | KISS1  |
| Alternative Name: | KISS1 ( <a href="#">KISS1 Products</a> )   |
| Background:       | KiSS-1 metastasis-suppressor (KISS1) is a metastasis suppressor gene that suppresses metastases of melanomas and breast carcinomas without affecting tumorigenicity. The |

## Target Details

---

metastasis suppressor properties may be mediated in part by cell cycle arrest and induction of apoptosis in malignant cells. Expression of KiSS1 has been localized to specific regions of the hypothalamus in many species and is regulated by gonadal steroids and across the estrous cycle. Recombinant KiSS1 protein was expressed in *E. coli* and purified by using conventional chromatography techniques.

Alternative Names: KiSS-1 metastasis-suppressor protein, Kisspeptin-1 protein, KiSS-1 protein, MGC39258 protein, ' ', KiSS 1, KiSS-1 metastasis-suppressor protein, KiSS-1, METASTIN protein, KiSS 1 protein, KiSS1 protein, KiSS1

---

Molecular Weight: 12.6 kDa (120 AA)

---

Pathways: [Positive Regulation of Peptide Hormone Secretion](#)

## Application Details

---

Application Notes: KiSS1 protein has been used in SDS PAGE and may be suitable for use in other assays to be determined by the end user.

---

Restrictions: For Research Use only

## Handling

---

Format: Liquid

---

Concentration: 1 mg/mL

---

Buffer: Supplied as a liquid in 20 mM Tris, pH 8.0, containing 0 mM DTT, and 10 % glycerol.

---

Preservative: Dithiothreitol (DTT)

---

Precaution of Use: This product contains Dithiothreitol: a POISONOUS AND HAZARDOUS SUBSTANCE, which should be handled by trained staff only.

---

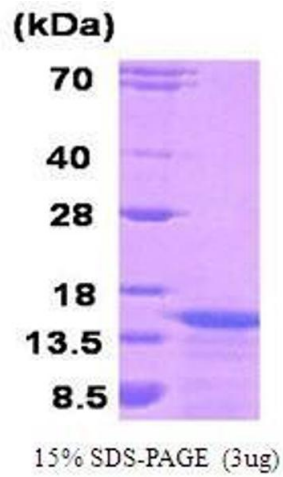
Handling Advice: Avoid repeated freeze/thaw cycles.

---

Storage: RT/-20 °C

---

Storage Comment: Store at 4 °C for short term storage (1/2 weeks). Aliquot and store at -20 °C or -70 °C for long term storage.



#### SDS-PAGE

**Image 1.** Figure annotation denotes ug of protein loaded and % gel used.