

Datasheet for ABIN934995
CDC37 Protein (AA 1-378)



[Go to Product page](#)

1 Image

Overview

Quantity:	100 µg
Target:	CDC37
Protein Characteristics:	AA 1-378
Origin:	Human
Source:	Escherichia coli (E. coli)
Protein Type:	Recombinant
Application:	SDS-PAGE (SDS)

Product Details

Sequence: MVDYSVWDHI EVSDDDEETH PNIDTASLFR WRHQARVERM EQFQKEKEEL DRGCRECKRK
VAECQRKLKE LEVAEGGKAE LERLQAEAQQ LRKEERSWEQ KLEEMRKKEK SMPWNVDTLS
KDGFSKSMVN TKPEKTEEDS EEVREQKHKT FVEKYEKQIK HFGMLRRWDD SQKYLSDNVH
LVCEETANYL VIWCIDLEVE EKCALMEQVA HQTIVMQFIL ELAKSLKVDP RACFRQFFTK
IKTADRQYME GFNDELEAFK ERVRGRAKLR IEKAMKEYEE EERKKRLGPG GLDPVEVYES
LPEELQKCFD VKDVQMLQDA ISKMDPTDAK YHMQRCIDSG LWVPNSKASE AKEGEEAGPG
DPLLEAVPKT GDEKDVSV

Characteristics: Purified recombinant Human CDC37 protein
Expression System: E.coli
Molecular weight on SDS-PAGE will appear higher.

Purity: > 95 % pure

Endotoxin Level: < 1.0 EU per µg of protein (determined by LAL method)

Target Details

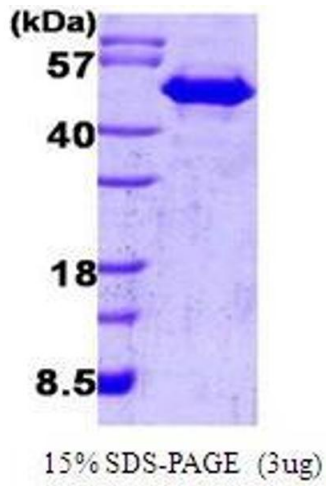
Target:	CDC37
Alternative Name:	CDC37 (CDC37 Products)
Background:	<p>CDC37, an essential gene in <i>Saccharomyces cerevisiae</i>, interacts genetically with multiple protein kinases. Cdc37 associates with the heat-shock protein 90 (Hsp90) molecular chaperone as one of several auxiliary proteins that are collectively referred to as Hsp90 co-chaperones. Cdc37 up-regulation is a common early event in some localized human cancers. Recombinant CDC37 protein was expressed in <i>E. coli</i> and purified by using conventional chromatography techniques.</p> <p>Alternative Names: CDC-37, CDC 37 protein, CDC37 protein protein, p50 protein, CDC37, CDC-37 protein, Hsp90 co chaperone Cdc37 protein, Hsp90 chaperone protein kinase targeting subunit p50Cdc37 protein, CDC37 cell division cycle 37 homolog protein, P50CDC37 protein, p50Cdc37., Hsp90 chaperone protein kinase targeting subunit protein, CDC 37 protein, Cell division cycle 37 homolog protein, Cell division cycle 37 homolog <i>S cerevisiae</i> hypothetical protein CDC37 protein, CDC 37, Cdc37 homolog protein, CDC37 protein</p>
Molecular Weight:	44.4Da (378 AA)

Application Details

Application Notes:	CDC37 protein has been used in SDS PAGE and may be suitable for use in other assays to be determined by the end user.
Restrictions:	For Research Use only

Handling

Format:	Liquid
Concentration:	1 mg/mL
Buffer:	Supplied as a liquid in 20 mM Tris, pH 8.0, containing 10 % glycerol.
Handling Advice:	Avoid repeated freeze/thaw cycles.
Storage:	RT/-20 °C
Storage Comment:	Store at 4 °C for short term storage (1/2 weeks). Aliquot and store at -20 °C or -70 °C for long term storage.



SDS-PAGE

Image 1. Figure annotation denotes ug of protein loaded and % gel used.