

Datasheet for ABIN935001
BLVRB Protein (AA 1-206)



[Go to Product page](#)

1 Image

Overview

Quantity:	100 µg
Target:	BLVRB
Protein Characteristics:	AA 1-206
Origin:	Human
Source:	Escherichia coli (E. coli)
Protein Type:	Recombinant
Application:	SDS-PAGE (SDS)

Product Details

Sequence: MAVKKIAIFG ATGQTGLTTL AQAVQAGYEV TVLVRDSSRL PSEGPRPAHV VGDVLQAAD
VDKTVAGQDA VIVLLGTRND LSPTTVMSEG ARNIVAAMKA HGVDKVVACT SAFLLWDPTK
VPPRLQAVTD DHIRMHKVLR ESGLKYVAVM PPHIGDQPLT GAYTVTL DGR GPSRVISKHD
LGHFMLRCLT TDEYDGHSTY PSHQYQ

Characteristics: Purified recombinant Human Biliverdin reductase B protein
Expression System: E.coli
Molecular weight on SDS-PAGE will appear higher.

Purity: > 95 % pure

Target Details

Target: BLVRB
Alternative Name: Biliverdin reductase B ([BLVRB Products](#))

Target Details

Background: Biliverdin reductase B (BLVRB) is an enzyme that converts biliverdin to bilirubin, converting a double-bond between the second and third pyrrole ring into a single-bond. BLVRB is found that major erythrocytic heme catabolic pathway in humans and most mammalian species. Biliverdin reductase is abundantly expressed in kidney, spleen, liver and brain as well as at lower levels in the thymus and minimal levels being detected in testis. Recombinant BLVRB protein was expressed in E. coli and purified by using conventional chromatography techniques.

Alternative Names: Biliverdin IX beta reductase protein, FLR protein, MGC117413 protein, Flavin reductase (NADPH) protein, Flavin reductase protein, Green heme binding protein protein, MGC117413 protein, BVRB protein, BLVRB protein, FR protein, SDR43U1 protein, NADPH flavin reductase., GHBP protein, NADPH dependent diaphorase protein, Biliverdin reductase B protein, BVR B protein

Molecular Weight: 22.1 kDa (206 AA)

Application Details

Application Notes: Biliverdin protein has been used in SDS PAGE and may be suitable for use in other assays to be determined by the end user.

Restrictions: For Research Use only

Handling

Format: Liquid

Concentration: 1 mg/mL

Buffer: Supplied as a liquid in 20 mM Tris, pH 8.5, containing 10 % glycerol, and 0 mM DTT.

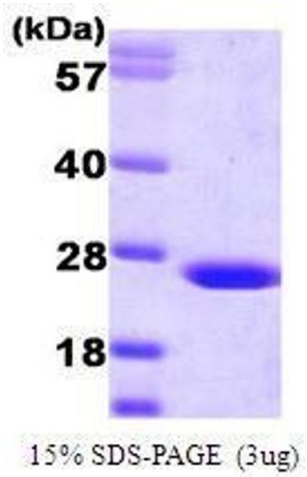
Preservative: Dithiothreitol (DTT)

Precaution of Use: This product contains Dithiothreitol: a POISONOUS AND HAZARDOUS SUBSTANCE, which should be handled by trained staff only.

Handling Advice: Avoid repeated freeze/thaw cycles.

Storage: RT/-20 °C

Storage Comment: Store at 4 °C for short term storage (1/2 weeks). Aliquot and store at -20 °C or -70 °C for long term storage.



SDS-PAGE

Image 1. Figure annotation denotes ug of protein loaded and % gel used.