

Datasheet for ABIN935003
GADD45G Protein (AA 1-159)



[Go to Product page](#)

1 Image

Overview

Quantity:	100 µg
Target:	GADD45G
Protein Characteristics:	AA 1-159
Origin:	Human
Source:	Escherichia coli (E. coli)
Protein Type:	Recombinant
Application:	SDS-PAGE (SDS)

Product Details

Sequence:	MTLEELVACD NAAQKMQTVT AAVEELLVAA QRQDRLTVGV YESAKLMNVD PDSVVLCLLA IDEEEEDDIA LQIHFTLIQS FCCDNDINIV RVSGMQRLAQ LLGPAETQG TTEARDLHCL LVTNPHTDAW KSHGLVEVAS YCEESRGNNQ WVPYISLQER
Characteristics:	Purified recombinant Human GADD45 G protein Expression System: E.coli Molecular weight on SDS-PAGE will appear higher.
Purity:	> 95 % pure

Target Details

Target:	GADD45G
Alternative Name:	GADD45G (GADD45G Products)
Background:	GADD45G is a member of GADD45 family (GADD45alpha, beta, and gamma) that are nuclear

Target Details

proteins with interact with various proteins implicated in stress responses and cell-cycle-related proteins. The function of GADD45 proteins is involved in growth-regulatory mechanisms and apoptosis. GADD45G protein responds to environmental stresses by mediating activation of p38/JNK pathway via MTK1/MEKK4 kinase and its transcript levels are increased following stressful growth arrest conditions and treatment with DNA-damaging agents. Recombinant GADD45G protein was expressed in E. coli and purified by using conventional chromatography techniques.

Alternative Names: GRP17, Growth arrest and DNA damage inducible gamma protein, DDIT2 protein, Growth arrest and DNA-damage-inducible gamma protein, GADD45G protein, Growth arrest and DNA-damage-inducible gamma protein, CR6 protein, Cytokine responsive protein CR6 protein

Molecular Weight: 17.8 kDa (160 AA)

Pathways: [Cell Division Cycle](#)

Application Details

Application Notes: GADD protein has been used in SDS PAGE and may be suitable for use in other assays to be determined by the end user.

Restrictions: For Research Use only

Handling

Format: Liquid

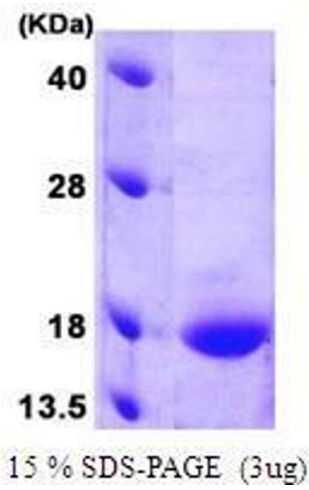
Concentration: 1 mg/mL

Buffer: Supplied as a liquid in 20 mM Tris-HCl, pH 7.5.

Handling Advice: Avoid repeated freeze/thaw cycles.

Storage: RT/-20 °C

Storage Comment: Store at 4 °C for short term storage (1/2 weeks). Aliquot and store at -20 °C or -70 °C for long term storage.



SDS-PAGE

Image 1. Figure annotation denotes ug of protein loaded and % gel used.