

Datasheet for ABIN935008

Glutaredoxin 1 Protein (GRX1) (AA 1-106)[Go to Product page](#)**1** Image

Overview

Quantity:	100 µg
Target:	Glutaredoxin 1 (GRX1)
Protein Characteristics:	AA 1-106
Origin:	Human
Source:	Escherichia coli (E. coli)
Protein Type:	Recombinant
Application:	SDS-PAGE (SDS)

Product Details

Sequence:	MAQEFVNCKI QPGKVVVFIK PTCPYCRRQA EILSQLPIKQ GLLEFVDITA TNHTNEIQDY LQQLTGARTV PRVFIGKDCI GGCSDLVSLQ QSGELLTRLK QIGALQ
Characteristics:	Purified recombinant Human Glutaredoxin 1 protein Expression System: E.coli Molecular weight on SDS-PAGE will appear higher.
Purity:	> 95 % pure

Target Details

Target:	Glutaredoxin 1 (GRX1)
Alternative Name:	Glutaredoxin 1 (GRX1 Products)
Target Type:	Viral Protein
Background:	Glutaredoxin(GRX), also known as thioltransferase, is a member of the thiol-disulfide

Target Details

oxidoreductase family. Glutaredoxin catalyzes the reversible reduction of protein-glutathionyl mixed disulfides to free sulfhydryl groups through a monothiol mechanism. Mammalian Glutaredoxin is known to have two isoforms, GRX1 and GRX2. GRX1 is a cytosolic protein, whereas GRX2 is localized both in the mitochondria and nucleus. Glutaredoxin-1 may be involved in various cellular events such as signal transduction, stress response, and metabolic regulation by regulating the redox status of cellular proteins. Recombinant human Glutaredoxin1 protein was expressed in *E. coli* and purified by using conventional chromatography techniques.

Alternative Names: TTase-1 protein, Glutaredoxin protein, GLRX protein, TTase 1 protein, Glutaredoxin-1, Glutaredoxin 1, Glutaredoxin 1 protein, Ttase protein, GRX protein, GRX1 protein, MGC117407 protein, Glutaredoxin1, Grx 1 protein, Thioltransferase protein, Glrx1 protein, Thioltransferase 1 protein, Glutaredoxin-1 protein, Thioltransferase-1 protein, Thioltransferase1 protein, TTase1., Glutaredoxin1 protein

Molecular Weight: 11.7 kDa (106 AA)

Pathways: [Cell RedoxHomeostasis](#)

Application Details

Application Notes: Glutaredoxin-1 protein has been used in SDS PAGE and may be suitable for use in other assays to be determined by the end user.

Restrictions: For Research Use only

Handling

Format: Liquid

Concentration: 1 mg/mL

Buffer: Supplied as a liquid in 20 mM Tris-HCl buffer, pH 8.0, containing 0 mM DTT, and 10 % glycerol.

Preservative: Dithiothreitol (DTT)

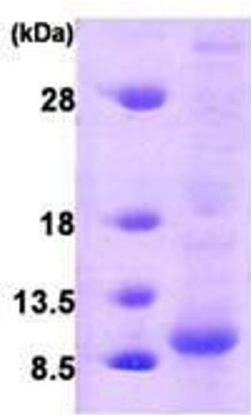
Precaution of Use: This product contains Dithiothreitol: a POISONOUS AND HAZARDOUS SUBSTANCE, which should be handled by trained staff only.

Handling Advice: Avoid repeated freeze/thaw cycles.

Storage: RT/-20 °C

Storage Comment: Store at 4 °C for short term storage (1/2 weeks). Aliquot and store at -20 °C or -70 °C for long

term storage.



15% SDS-PAGE (3ug)

SDS-PAGE

Image 1. Figure annotation denotes ug of protein loaded and % gel used.