

Datasheet for ABIN935016 **GSTM1 Protein (AA 1-218)**



[Go to Product page](#)

1 Image

Overview

Quantity:	100 µg
Target:	GSTM1
Protein Characteristics:	AA 1-218
Origin:	Mouse
Source:	Escherichia coli (E. coli)
Protein Type:	Recombinant
Biological Activity:	Active
Application:	SDS-PAGE (SDS)

Product Details

Sequence:	MPMILGYWNV RGLTHPIRML LEYTDSSYDE KRYTMGDAPD FDRSQWLNEK FKLGLDFPNL PYLIDGSHKI TQSNAILRYL ARKHHLDTGET EEERIRADIV ENQVMDTRMQ LIMLCYNPDF EKQKPEFLKT IPEKMKLYSE FLGKRPWFAG DKVTYVDFLA YDILDQYRMF EPKCLDAFPN LRDFLARFEG LKKISAYMKS SRYIATPIFS KMAHWSNK
Characteristics:	Purified recombinant Mouse GSTM1 protein Expression System: E.coli Bioactivity: Specific activity is 3 units/mg, and is defined as the amount of enzyme that conjugate 1.0 uM of 1-chloro-2,4-dinitrobenzene (CDNB) with reduced glutathione per minute at pH 6.5 at 25 °C. Molecular weight on SDS-PAGE will appear higher.
Purity:	> 95 % pure

Product Details

Endotoxin Level: < 1.0 EU per µg of protein (determined by LAL method)

Target Details

Target: GSTM1

Alternative Name: GSTM1 ([GSTM1 Products](#))

Background: GSTM1 is a glutathione S-transferase that belongs to the mu class. This enzyme acts by catalyzing the reaction of glutathione with an acceptor molecule to form an S-substituted glutathione (S=sulfur). The reactions utilizing glutathione contribute the transformation of a wide variety of electrophiles, including reactive products of lipid, protein, carcinogens, therapeutic drugs, environmental toxins, and products of oxidative stress. Recombinant GSTM1 protein was expressed in E. coli and purified by using conventional chromatography techniques.

Alternative Names: GST class-mu1 protein, GSTM-1, GST class mu 1 protein, GSTM1, GSTM 1 protein, GSTM1., GST1 protein, GSTM-1 protein, GST class Mu protein, pmGT10 protein, Glutathione S-transferase Mu 1 Glutathione S transferase mu protein, GSTM 1, GST mu protein, GST 1-1 protein

Molecular Weight: 25.9 kDa (218 AA)

Pathways: [Negative Regulation of Transporter Activity](#)

Application Details

Application Notes: GSTM1 protein has been used in SDS PAGE and may be suitable for use in other assays to be determined by the end user.

Assay Procedure:

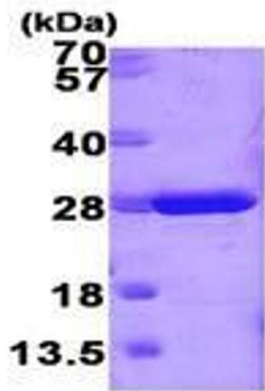
1. Prepare a 1 mL reaction mix into a suitable container: The final concentrations are 97 mM potassium phosphate, 0.97 mM EDTA, 2.5 mM glutathione, reduced, 1.0 mM 1-chloro-2,4-dinitrobenzene (CDNB), 3.2 % (v/v) ethanol.
2. Equilibrate to 25 °C and monitor at A340 nm until the value is constant using a spectrophotometer.
3. Add 50 µL of recombinant mouse GSTM1 protein with various concentrations (1 µg, 1 µg, 1 µg) in 950 µL reaction buffer.
4. Mix by inversion and record the increase at A340 nm for 5 minutes.

Restrictions: For Research Use only

Handling

Format:	Liquid
Concentration:	1 mg/mL
Buffer:	Supplied as a liquid in PBS, pH 7.4, containing 5 mM glutathione.
Handling Advice:	Avoid repeated freeze/thaw cycles.
Storage:	RT/-20 °C
Storage Comment:	Store at 4 °C for short term storage (1/2 weeks). Aliquot and store at -20 °C or -70 °C for long term storage.

Images



15% SDS-PAGE (3ug)

SDS-PAGE

Image 1. Figure annotation denotes ug of protein loaded and % gel used.