

Datasheet for ABIN935054
CALB1 Protein (AA 1-261)



[Go to Product page](#)

1 Image

Overview

Quantity:	100 µg
Target:	CALB1
Protein Characteristics:	AA 1-261
Origin:	Human
Source:	Escherichia coli (E. coli)
Protein Type:	Recombinant
Application:	SDS-PAGE (SDS)

Product Details

Sequence:	MAESHLQSSL ITASQFFEIW LHFADGSGY LEGKELQNLI QELQQARKKA GLELSPEMKT FVDQYQQRDD GKIGIVELAH VLPTEENFLL LFRCQQLKSC EEFMKTWRKY DTDHSGFIET EELKNFLKDL LEKANKTVDD TKLAEYTDLM LKLFDSNNDG KLELTEMARL LPVQENFLLK FQGIKMCCKE FNKAFELYDQ DGNGYIDENE LDALLKDLCE KNKQQLDINN ITTYKKNIMA LSDGGKLYRT DLALILCAGD N
Characteristics:	Purified recombinant Human Calbindin 1 protein Expression System: E.coli
Purity:	> 95 % pure

Target Details

Target:	CALB1
Alternative Name:	Calbindin 1 (CALB1 Products)

Target Details

Background: Calbindin 1 is a calcium binding protein belonging to the troponin C superfamily. Calbindin is expressed in neural tissues. It plays an essential role in calcium regulation (including calcium transport and uptake, calcification of bone and teeth) and calcium related signalling in neurons and transiently in embryological development. This calbindin also has a role in protecting neurons from apoptotic cell death. Disregulation of this calbindin protein relates to epilepsy, amyotrophic lateral sclerosis, Huntington's disease. Recombinant human Calbindin1 was expressed in E. coli and purified by using conventional chromatography techniques.

Alternative Names: Calbindin -1 protein, Calbindin 1 protein, Calbindin -1, Calbindin 1, CAB27 protein, , D-28K protein, Calbindin1 protein, calbindin 1 28kDa protein, Calbindin D28 protein, CALB1 protein, CALB protein, Calbindin 1

Molecular Weight: 30 kDa (261 AA)

Application Details

Application Notes: Calbindin 1 protein has been used in SDS PAGE and may be suitable for use in other assays to be determined by the end user.

Restrictions: For Research Use only

Handling

Format: Liquid

Concentration: 1 mg/mL

Buffer: Supplied as a liquid in 20 mM Tris-HCl buffer, pH 8.0, containing 0 mM DTT, 10 % glycerol, and 0 mM EDTA.

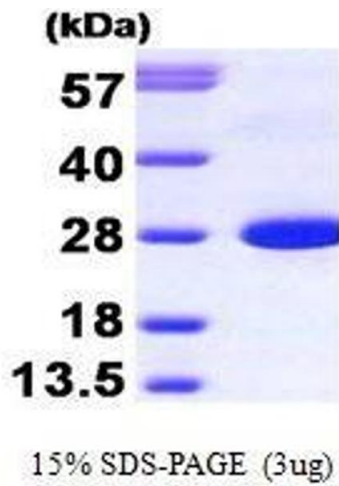
Preservative: Dithiothreitol (DTT)

Precaution of Use: This product contains Dithiothreitol: a POISONOUS AND HAZARDOUS SUBSTANCE, which should be handled by trained staff only.

Handling Advice: Avoid repeated freeze/thaw cycles.

Storage: RT/-20 °C

Storage Comment: Store at 4 °C for short term storage (1/2 weeks). Aliquot and store at -20 °C or -70 °C for long term storage.



SDS-PAGE

Image 1. Figure annotation denotes ug of protein loaded and % gel used.