

Datasheet for ABIN935058
LGALS1/Galectin 1 Protein (AA 1-135)



[Go to Product page](#)

1 Image

Overview

Quantity:	100 µg
Target:	LGALS1/Galectin 1 (LGALS1)
Protein Characteristics:	AA 1-135
Origin:	Human
Source:	Escherichia coli (E. coli)
Protein Type:	Recombinant
Application:	SDS-PAGE (SDS)

Product Details

Sequence:	MACGLVASNL NLKPGECLRV RGEVAPDAKS FVLNLGKDSN NLCLHFNPRF NAHGDANTIV CNSKDGGAWG TEQREAVFPF QPGSVAEVCITFDQANLTVK LPDGYEFKFP NRLNLEAINY MAADGDFKIK CVAFD
Characteristics:	Purified recombinant Human Galectin 1 protein Expression System: E.coli
Purity:	> 90 % pure
Endotoxin Level:	< 1.0 EU per µg of protein (determined by LAL method)

Target Details

Target:	LGALS1/Galectin 1 (LGALS1)
Alternative Name:	Galectin 1 (LGALS1 Products)
Background:	Galectin-1 is a member of the beta-galactoside-binding proteins implicated in modulating cell-

Target Details

cell and cell-matrix interactions. This protein is an autocrine negative growth factor that regulates cell proliferation. It controls cell survival by inducing apoptosis of activated T cells and immature thymocytes, thus Galectin-1 has immunosuppressive and anti-inflammatory properties. Galectin-1 also regulates tumor angiogenesis and is a target for angiostatic cancer therapy. Recombinant human Galectin-1 was expressed in E. coli and purified by using conventional chromatography.

Alternative Names: Galectin 1 protein, Galectin1 protein, LGALS 1 protein, Beta galactoside binding lectin protein, GBP protein, Galectin1, S Lac lectin 1., Galectin protein, HPL protein, HBL protein, lactose-binding lectin 1 protein, MAPK activating protein MP12 protein, Putative MAPK activating protein MP12 protein, S-Lac lectin1 protein, GAL1 protein, DKFZp686E23103 protein, Galectin 1, Lactose binding lectin 1 protein, galaptin protein, Galectin-1, LGALS1 protein, GBP protein, Galectin-1 protein, Lectin galactoside binding soluble 1 protein, Beta galactoside binding lectin L 14 I protein, 14 kDa lectin protein

Molecular Weight: 14.7 kDa (135 AA)

Pathways: [Carbohydrate Homeostasis](#)

Application Details

Application Notes: Galectin-1 protein has been used in SDS PAGE and may be suitable for use in other assays to be determined by the end user.

Restrictions: For Research Use only

Handling

Format: Liquid

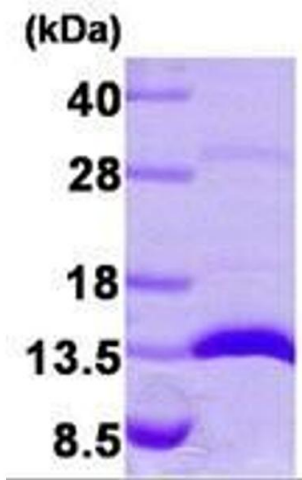
Concentration: 1 mg/mL

Buffer: Supplied as a liquid in 20 mM Tris-HCl, pH 7.5, containing 10 % glycerol.

Handling Advice: Avoid repeated freeze/thaw cycles.

Storage: RT/-20 °C

Storage Comment: Store at 4 °C for short term storage (1/2 weeks). Aliquot and store at -20 °C or -70 °C for long term storage.



SDS-PAGE

Image 1. Figure annotation denotes ug of protein loaded and % gel used.