

Datasheet for ABIN935060
TCL1A Protein (AA 1-114)



[Go to Product page](#)

1 Image

Overview

Quantity:	100 µg
Target:	TCL1A
Protein Characteristics:	AA 1-114
Origin:	Human
Source:	Escherichia coli (E. coli)
Protein Type:	Recombinant
Application:	SDS-PAGE (SDS)

Product Details

Sequence:	MAECP TLGEA VTDHPDRLWA WEK FVYLDEK QHAWLPLTIE IKDRLQLRVL LRREDVVLGR PMTPTQIGPS LLPIMWQLYP DGRYRSSDSS FWRLVYHIKI DGVEDMLLEL LPDD
Characteristics:	Purified recombinant Human TCL1 A protein Expression System: E.coli Molecular weight on SDS-PAGE will appear higher.
Purity:	> 90 % pure

Target Details

Target:	TCL1A
Alternative Name:	TCL1A (TCL1A Products)
Background:	TCL1A, also known as T-cell leukemia/lymphoma 1A, is a protein with a suggested role in intracellular regulation of T cell signaling. TCL1A binds to the pleckstrin homology domain of

Target Details

Akt (protein kinase B) family proteins, which facilitates Akt dimerization and activity. By increasing Akt activity TCL1A may enhance the serine/threonine phosphorylation of major Akt signaling substrates, such as Ikk complex, mTOR, BAD, p70S6 kinase, FOXO transcription factors, and GSK3b. These substrates regulate cellular differentiation, growth, survival, and metabolism. Recombinant TCL1A protein was expressed in E. coli and purified by using conventional chromatography techniques.

Alternative Names: TCL 1 protein protein, T cell leukemia 1 protein, TCLA-1 protein, TCL1A, TCLA 1, TCL-1 protein, TCL1A protein, TCL1 oncogene protein, P14 TCL1 protein protein, protein p14TCL1 protein, TCL1 PEN protein, TCLA 1 protein, Oncogene TCL1 protein, T-cell leukemia/lymphoma 1A anti TCL1A protein, T cell lymphoma 1A protein, TCL1A., TCL1 protein, T cell lymphoma 1 protein, P14 TCL1 protein, TCLA-1

Molecular Weight: 13.4 kDa (114 AA)

Pathways: [Stem Cell Maintenance](#)

Application Details

Application Notes: TCL1A protein has been used in SDS PAGE and may be suitable for use in other assays to be determined by the end user.

Restrictions: For Research Use only

Handling

Format: Liquid

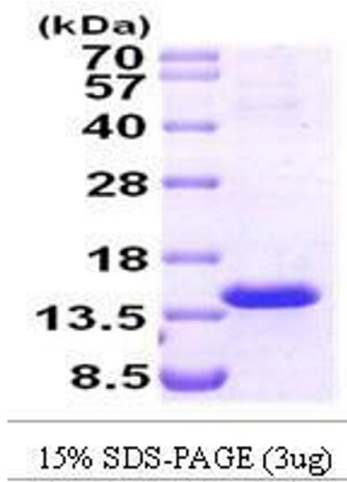
Concentration: 1 mg/mL

Buffer: Supplied as a liquid in 50 mM Tris-HCl buffer, pH 7.5, containing 10 % glycerol.

Handling Advice: Avoid repeated freeze/thaw cycles.

Storage: RT/-20 °C

Storage Comment: Store at 4 °C for short term storage (1/2 weeks). Aliquot and store at -20 °C or -70 °C for long term storage.



SDS-PAGE

Image 1. Figure annotation denotes ug of protein loaded and % gel used.