

Datasheet for ABIN935063 HDGF Protein (AA 1-100)



[Go to Product page](#)

1 Image

Overview

Quantity:	100 µg
Target:	HDGF
Protein Characteristics:	AA 1-100
Origin:	Human
Source:	Escherichia coli (E. coli)
Protein Type:	Recombinant
Application:	SDS-PAGE (SDS)

Product Details

Sequence:	MSRSNRQKEY KCGDLVFAKM KGYPHWPARI DEMPEAAVKS TANKYQVFFF GTHETAFLGP KDLFPYEESK EKFGKPNKRK GFSEGLWEIE NNPTVKASGY
Characteristics:	Purified recombinant Human HDGF protein Expression System: E.coli
Purity:	> 95 % pure

Target Details

Target:	HDGF
Alternative Name:	HDGF (HDGF Products)
Background:	Hepatoma-derived growth factor isoform a, also known as HDGF, belongs to the hepatoma-derived growth factor family. HDGF was originally identified as a secreted mitogen from the human hepatoma cell line Huh-7. This nuclear targeted vascular smooth muscle cell mitogen is

Target Details

a heparin-binding protein that is highly expressed in tumor cells where it stimulates proliferation. HDGF is also reported to be involved in organ development and lung remodeling after injury by promoting proliferation of lung epithelial cells. Recombinant human HDGF was expressed in *E. coli* and purified by using conventional chromatography techniques.

Alternative Names: HMG1L2 protein, , High mobility group protein 1 like 2 protein, Hepatoma-derived growth factor isoform a Hepatoma derived growth factor protein

Molecular Weight: 11.5 kDa (100 AA)

Pathways: [ER-Nucleus Signaling](#)

Application Details

Application Notes: HDGF protein has been used in SDS PAGE and may be suitable for use in other assays to be determined by the end user.

Restrictions: For Research Use only

Handling

Format: Liquid

Concentration: 1 mg/mL

Buffer: Supplied as a liquid in 20 mM Tris-HCl buffer, pH 7.5, containing 0 mM DTT, 10 % glycerol, and 0 mM EDTA.

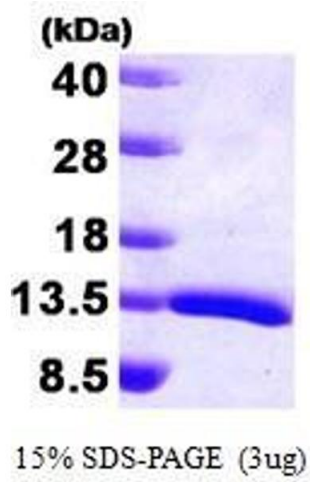
Preservative: Dithiothreitol (DTT)

Precaution of Use: This product contains Dithiothreitol: a POISONOUS AND HAZARDOUS SUBSTANCE, which should be handled by trained staff only.

Handling Advice: Avoid repeated freeze/thaw cycles.

Storage: RT/-20 °C

Storage Comment: Store at 4 °C for short term storage (1/2 weeks). Aliquot and store at -20 °C or -70 °C for long term storage.



SDS-PAGE

Image 1. Figure annotation denotes ug of protein loaded and % gel used.