

Datasheet for ABIN935065
ALDH1A1 Protein (AA 1-501)



[Go to Product page](#)

1 Image

Overview

Quantity:	100 µg
Target:	ALDH1A1
Protein Characteristics:	AA 1-501
Origin:	Human
Source:	Escherichia coli (E. coli)
Protein Type:	Recombinant
Application:	SDS-PAGE (SDS)

Product Details

Sequence: MSSSGTPDLP VLLTDLKIQY TKIFINNEWH DSVSGKKFPV FNPATEEELC QVEEGDKEDV
DKAVKAARQA FQIGSPWRM DASERGRLLY KLADLIERDR LLLATMESMN GGLYSNAYL
NDLAGCIKTL RYCAGWADKI QGRTIPIDGN FFTYTRHEPI GVCQGIIIPWN FPLVMLIWKI
GPALSCGNTV VVKPAEQTPL TALHVASLIK EAGFPPGVVN IVPGYGPTAG AAISSHMDID
KVAFTGSTEV GKLIKEAAGK SNLKRVTLEL GKGSPCIVLA DADLDNAVEF AHHG VFYHQG
QCCIAASRIF VEESYDEFV RRSVERAKKY ILGNPLTPGV TQGPQIDKEQ YDKILD LIES
GKKEGAKLEC GGGPWGNKGY FVQPTVFSNV TDEMRIAKEE IFGPVQQIMK FKSLDDVIKR
ANNTFYGLSA GVFTKDIDKA ITISSALQAG TVWVNCYGVV SAQCPF GGFK MSGNGRELGE
YGFHEYTEVK TVTVKISQKN S

Characteristics: Purified recombinant Human Aldehyde dehydrogenase 1 A1 protein
Expression System: E.coli

Purity: > 90 % pure

Target Details

Target:	ALDH1A1
Alternative Name:	Aldehyde dehydrogenase 1A1 (ALDH1A1 Products)
Background:	<p>Aldehyde dehydrogenase 1A1 (ALDH1A1), also known as retinal dehydrogenase 1, is the second enzyme of the major oxidative pathway of alcohol metabolism. Two major liver isoforms of this enzyme, cytosolic and mitochondrial, can be distinguished by their electrophoretic mobilities, kinetic properties, and subcellular localizations. ALDH1A1 also belongs to the group of corneal crystallins that help maintain the transparency of the cornea. Recombinant ALDH1A1 protein was expressed in E. coli and purified by using conventional chromatography techniques.</p> <p>Alternative Names: Aldehyde dehydrogenase family 1 member A1 protein, RALDH 1 protein, ALDH-E1 protein, Aldehyde Dehydrogenase protein, Aldehyde dehydrogenase 1 soluble protein, RALDH1 protein, Retinal dehydrogenase 1 protein, Aldehyde dehydrogenase 1A1 protein, PUMB1 protein, ALDH 1 protein, Aldehyde dehydrogenase cytosolic protein, RALDH1 protein, AHD2 protein, ALDH class 1 protein, RalDH1 Aldehyde dehydrogenase 1 family member A1 protein, ALHDII protein, ALDC protein, Acetaldehyde dehydrogenase 1 protein, ALDH1 A1 protein, ALDH 1A1 protein, ALDH11 protein, MGC2318 protein, , ALDH-E1 protein, Aldehyde dehydrogenase liver cytosolic protein, ALDH1 protein</p>
Molecular Weight:	54.8 kDa (501 AA)
Pathways:	Dopaminergic Neurogenesis

Application Details

Application Notes:	Aldehyde dehydrogenase protein has been used in SDS PAGE and may be suitable for use in other assays to be determined by the end user.
Restrictions:	For Research Use only

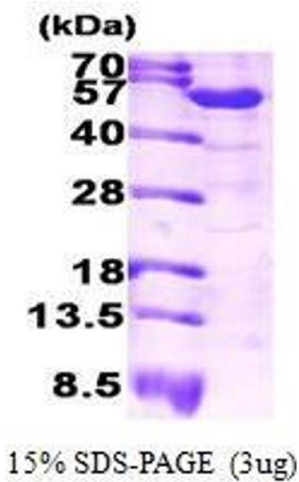
Handling

Format:	Liquid
Concentration:	1 mg/mL
Buffer:	Supplied as a liquid in 50 mM Tris-HCl buffer, pH 7.5, containing 10 % glycerol.
Handling Advice:	Avoid repeated freeze/thaw cycles.
Storage:	RT/-20 °C

Handling

Storage Comment: Store at 4 °C for short term storage (1/2 weeks). Aliquot and store at -20 °C or -70 °C for long term storage.

Images



SDS-PAGE

Image 1. Figure annotation denotes ug of protein loaded and % gel used.