

Datasheet for ABIN935071
MAT2B Protein (AA 1-323)



[Go to Product page](#)

1 Image

Overview

Quantity:	100 µg
Target:	MAT2B
Protein Characteristics:	AA 1-323
Origin:	Human
Source:	Escherichia coli (E. coli)
Protein Type:	Recombinant
Application:	SDS-PAGE (SDS)

Product Details

Sequence:	MPPEPEDMEQ EEVNIPNRRV LVTGATGLLG RAVHKEFQQN NWHAVGCGFR RARPKFEQVN LLDSNAVHHI IHDFQPHVIV HCAAERRPDV VENQPDAASQ LNVDASGNLA KEAAAVGAFI IYISSDYVFD GTNPPYREED IPAPLNLYGK TKLDGEKAVL ENNLGAAVLR IPILYGEVEK LEESAVTVMF DKVQFSNKSA NMDHWQQRFP THVKDVATVC RQLAEKRMLD PSIKGTFHWS GNEQMTKYEM ACAIADAFNL PSSHLRPITD SPVLGAQRPR NTQLDCSKLE TLGIGQRTPF RIGIKESLWP FLIDKRWRQT VFH
Characteristics:	Purified recombinant Human MAT II beta protein Expression System: E.coli
Purity:	> 90 % pure

Target Details

Target:	MAT2B
---------	-------

Target Details

Alternative Name: MAT II beta ([MAT2B Products](#))

Background: Methionine adenosyltransferase II, beta (MAT II beta) belongs to the methionine adenosyltransferase (MAT) family. MAT II beta catalyzes the biosynthesis of S-adenosylmethionine from methionine and ATP. This protein is the regulatory beta subunit of MAT. Its expression in hepatoma cell lines may lead to increase DNA synthesis and thereby participate to cell proliferation. Recombinant human MAT II beta was expressed in E. coli and purified by using conventional chromatography techniques.

Alternative Names: MGC12237 protein, MATIIbeta protein, # Methionine adenosyltransferase 2 beta subunit # Methionine adenosyltransferase 2 subunit beta # Methionine adenosyltransferase II beta # OTTMUSP00000005600 # Putative protein product of Nbla02999 # RP23-382C18.2 # Short chain dehydrogenase/reductase family 23E member 1 # TGR, Beta regulatory subunit of methionine adenosyltransferase protein, A182287 protein, MAT II protein, MAT2B protein, SDR23E1 protein, TGR protein, 2410018D16Rik protein, Nbla02999 protein, dTDP 4 keto 6 deoxy D glucose 4 reductase protein, Methionine adenosyltransferase II protein, beta 1110064C04Rik protein, AU022853 protein, MAT II beta protein

Molecular Weight: 36.4 kDa (323 AA)

Pathways: [Ribonucleoside Biosynthetic Process](#), [Methionine Biosynthetic Process](#), [SARS-CoV-2 Protein Interactome](#)

Application Details

Application Notes: MAT II beta protein has been used in SDS PAGE and may be suitable for use in other assays to be determined by the end user.

Restrictions: For Research Use only

Handling

Format: Liquid

Concentration: 1 mg/mL

Buffer: Supplied as a liquid in 20 mM Tris-HCl buffer, pH 8.0, containing 0 mM DTT, and 10 % glycerol.

Preservative: Dithiothreitol (DTT)

Precaution of Use: This product contains Dithiothreitol: a POISONOUS AND HAZARDOUS SUBSTANCE, which should be handled by trained staff only.

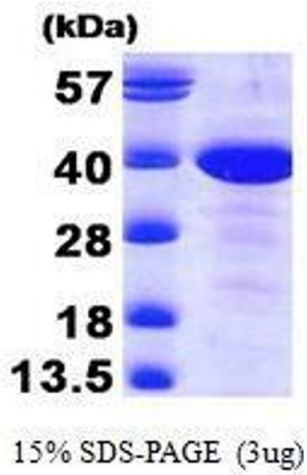
Handling Advice: Avoid repeated freeze/thaw cycles.

Handling

Storage: RT/-20 °C

Storage Comment: Store at 4 °C for short term storage (1/2 weeks). Aliquot and store at -20 °C or -70 °C for long term storage.

Images



SDS-PAGE

Image 1. Figure annotation denotes ug of protein loaded and % gel used.