

## Datasheet for ABIN935072 **SKP1 Protein (AA 1-160)**



[Go to Product page](#)

### 1 Image

#### Overview

Quantity:	100 µg
Target:	SKP1
Protein Characteristics:	AA 1-160
Origin:	Human
Source:	Escherichia coli (E. coli)
Protein Type:	Recombinant
Application:	SDS-PAGE (SDS)

#### Product Details

Sequence:	MPSIKLQSSD GEIFEVDVEI AKQSVTIKTM LEDLGMDDDEG DDDPVPLPNV NAAILKKVIQ WCTHHKDDPP PPEDDENKEK RTDDIPVWDQ EFLKVDQGTL FELILAANYL DIKGLLDVTC KTVANMIKGG TPEEIRKTFN IKNDFTEEEE AQVGSTQFCL
Characteristics:	Purified recombinant Human SKP1 protein Expression System: E.coli
Purity:	> 90 % pure

#### Target Details

Target:	SKP1
Alternative Name:	SKP1 ( <a href="#">SKP1 Products</a> )
Background:	S-phase kinase-associated protein 1, also known as SKP1, is an F-box protein which functions as a substrate recognition component of the SCF ubiquitin ligase complex. It binds to proteins

## Target Details

---

containing an F-box motif, such as cyclin F, S-phase kinase-associated protein 2, and other regulatory proteins involved in ubiquitin dependent proteolysis. It is also involved in the control of beta-catenin levels and the activity of beta-catenin dependent TCF transcription factors. Recombinant human SKP1 protein was expressed in E. coli and purified by using conventional chromatography techniques.

Alternative Names: SKP-1, MGC34403 protein, Transcription elongation factor B protein, p19A protein, S-phase kinase-associated protein 1 isoform a Cyclin A/CDK2 associated p19 protein, SKP-1 protein, Organ of Corti protein 2 protein, EMC19 protein, S phase kinase associated protein 1 protein, SKP1A protein, SKP 1A protein, SKP 1 protein, OCP-II protein, MGC34403 protein, RNA polymerase II elongation factor like protein OCP2 protein, TCEB1L protein, OCPII protein, RNA polymerase II elongation factor like protein protein, SIII protein, OCP 2 protein, p19skp1 protein, S phase kinase associated protein 1A p19A protein, Transcription elongation factor B SIII polypeptide 1 like., Transcription Elongation Factor B 1 like protein, OCP II protein, SKP1, Cyclin A/CDK2 associated protein p19 protein, Skp 1 protein, SKP 1, OCP2 protein, OCP II protein protein, S phase kinase associated protein 1A protein

---

Molecular Weight: 18 kDa (160 AA)

Pathways: [Cell Division Cycle](#), [Hedgehog Signaling](#), [Mitotic G1-G1/S Phases](#)

## Application Details

---

Application Notes: SKP1 protein has been used in SDS PAGE and may be suitable for use in other assays to be determined by the end user.

Restrictions: For Research Use only

## Handling

---

Format: Liquid

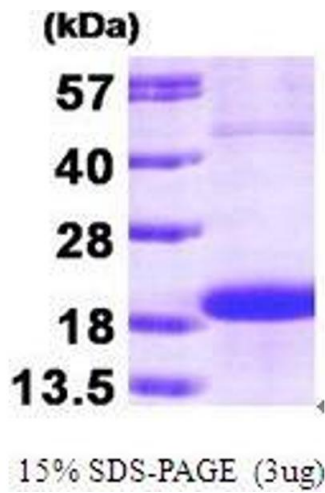
Concentration: 1 mg/mL

Buffer: Supplied as a liquid in 20 mM Tris-HCl buffer, pH 8.0, containing 50 mM NaCl, and 10 % glycerol.

Handling Advice: Avoid repeated freeze/thaw cycles.

Storage: RT/-20 °C

Storage Comment: Store at 4 °C for short term storage (1/2 weeks). Aliquot and store at -20 °C or -70 °C for long term storage.



#### SDS-PAGE

**Image 1.** Figure annotation denotes ug of protein loaded and % gel used.