

Datasheet for ABIN935076
CAPG Protein (AA 1-348)



[Go to Product page](#)

1 Image

Overview

Quantity:	100 µg
Target:	CAPG
Protein Characteristics:	AA 1-348
Origin:	Human
Source:	Escherichia coli (E. coli)
Protein Type:	Recombinant
Application:	SDS-PAGE (SDS)

Product Details

Sequence: MYTAIPQSGS PFPGSVQDPG LHVWRVEK LK PVPVAQENQG VFFSGDSYLV LHNGPEEVSH
LHLWIGQQSS RDEQGACAVL AVHLNLTLLGE RPVQHREVQG NESDLFMSYF PRGLKYQEGG
VESAFHKTST GAPAAIKKLY QVKGKKNIRA TERALNWDSF NTGDCFILDL GQNIFAWCGG
KSNILERNKA RDLALAIRDS ERQGKAQVEI VTDGEEPAEM IQVLGPKPAL KEGNPEEDLT
ADKANAQAAA LYKVSDATGQ MNLTQVADSS PFALELLISD DCFVLDNGLC GKIYIWKGRK
ANEKERQAAL QVAEGFISRM QYAPNTQVEI LPQGRESPIF KQFFKDWK

Characteristics: Purified recombinant Human CAPG protein
Expression System: E.coli

Purity: > 95 % pure

Target Details

Target: CAPG

Target Details

Alternative Name: CAPG ([CAPG Products](#))

Background: Macrophage-capping protein, also known as CAPG, belongs to the gelsolin/villin family of actin-regulatory proteins. CAPG is a calcium-sensitive DNA-binding protein that plays a role in macrophage function. It is expressed in macrophages and macrophage-like cells and can localize both to the nucleus and the cytoplasm. This protein reversibly blocks the barbed ends of F-actin filaments in a Ca²⁺ and phosphoinositide-regulated manner, but does not sever preformed actin filaments. Recombinant human CAPG was expressed in *E. coli* and purified by using conventional chromatography techniques.

Alternative Names: Capping protein gelsolin like protein, Myc basic motif homolog 1., Actin regulatory protein CAP G protein, gCap39 protein, MCP protein, CAPG protein, Macrophage capping protein protein, mbh1 protein, Gelsolin like capping protein protein, AFCP protein, Macrophage-capping protein Actin capping protein GCAP39 protein, Capping protein (actin filament) gelsolin like protein

Molecular Weight: 38.5 kDa (348 AA)

Pathways: [Regulation of Actin Filament Polymerization](#)

Application Details

Application Notes: CAPG protein has been used in SDS PAGE and may be suitable for use in other assays to be determined by the end user.

Restrictions: For Research Use only

Handling

Format: Liquid

Concentration: 1 mg/mL

Buffer: Supplied as a liquid in 20 mM Tris-HCl buffer, pH 8.0, containing 0 mM DTT, and 10 % glycerol.

Preservative: Dithiothreitol (DTT)

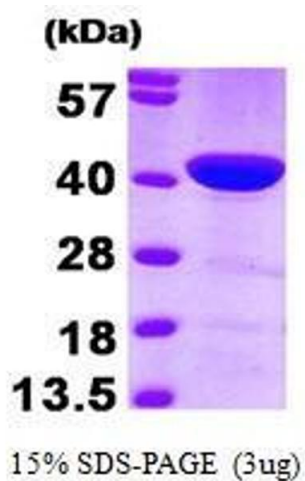
Precaution of Use: This product contains Dithiothreitol: a POISONOUS AND HAZARDOUS SUBSTANCE, which should be handled by trained staff only.

Handling Advice: Avoid repeated freeze/thaw cycles.

Storage: RT/-20 °C

Storage Comment: Store at 4 °C for short term storage (1/2 weeks). Aliquot and store at -20 °C or -70 °C for long

term storage.



SDS-PAGE

Image 1. Figure annotation denotes ug of protein loaded and % gel used.