

Datasheet for ABIN935078
GSTA1 Protein (AA 1-222)



[Go to Product page](#)

1 Image

Overview

Quantity:	100 µg
Target:	GSTA1
Protein Characteristics:	AA 1-222
Origin:	Human
Source:	Escherichia coli (E. coli)
Protein Type:	Recombinant
Biological Activity:	Active
Application:	SDS-PAGE (SDS)

Product Details

Sequence:	MAEKPKLHYF NARGRMESTR WLLAAAGVEF EEKFIKSAED LDKLRNDGYL MFQQVPMVEI DGMKLVQTRA ILNYIASKYN LYGKDIKERA LIDMYIEGIA DLGEMILLLP VCPPEEKDAK LALIKEKIKN RYFPAFEKVL KSHGQDYLVG NKLSRADIHL VELLYYVEEL DSSLISSFPL LKALKTRISN LPTVKKFLQP GSPRKPPMDE KSLEEARKIF RF
Characteristics:	Purified recombinant Human GSTA1 protein Expression System: E.coli Bioactivity: Specific activity is 5-8 units/mg, and is defined as the amount of enzyme that conjugate 1.0 uM of 1-chloro-2,4-dinitrobenzene (CDNB) with reduced glutathione per minute at pH 6.5 at 25 °C.
Purity:	> 90 % pure

Target Details

Target:	GSTA1
Alternative Name:	GSTA1 (GSTA1 Products)
Background:	<p>GSTA1, also known as Glutathione S-transferase alpha 1, belongs to a glutathione S-transferase alpha class and is the most abundantly expressed in liver. This protein functions in the detoxification of electrophilic compounds, including carcinogens, therapeutic drugs, environmental toxins and products of oxidative stress, by conjugation with glutathione. Recombinant human GSTA1 protein was expressed in E. coli and purified by using conventional chromatography techniques.</p> <p>Alternative Names: GSTA-1 protein, GSTA 1 protein, HA subunit 1., GTH1 protein, Glutathione S-transferase alpha 1 Glutathione S transferase A1 protein, GSTA1 1 protein, GSTA1, GSTA-1, GST epsilon protein, GSTA1-1 protein, GST2 protein, GSTA 1, GSTA1 protein</p>
Molecular Weight:	25.6 kDa (222 AA)

Application Details

Application Notes:	GSTA1 protein has been used in SDS PAGE and may be suitable for use in other assays to be determined by the end user.
Assay Procedure:	<ol style="list-style-type: none">1. Prepare a 1 mL reaction mix into a suitable container: The final concentrations are 97 mM potassium phosphate, 0.97 mM EDTA, 2.5 mM glutathione, reduced, 1.0 mM 1-chloro-2,4-dinitrobenzene (CDNB), 3.2 % (v/v) ethanol.2. Equilibrate to 25 °C and monitor at A340 nm until the value is constant using a spectrophotometer.3. Add 50 µL of recombinant GSTA1 protein with various concentrations (1 µg, 1 µg, 1 µg) in 950 µL reaction buffer.4. Mix by inversion and record the increase at A340 nm for 5 minutes.
Restrictions:	For Research Use only

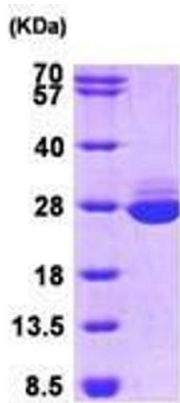
Handling

Format:	Liquid
Concentration:	1 mg/mL
Buffer:	Supplied as a liquid in 20 mM Tris-HCl buffer, pH 8.0, containing 0 mM DTT and 10 % glycerol.
Preservative:	Dithiothreitol (DTT)

Handling

Precaution of Use:	This product contains Dithiothreitol: a POISONOUS AND HAZARDOUS SUBSTANCE, which should be handled by trained staff only.
Handling Advice:	Avoid repeated freeze/thaw cycles.
Storage:	RT/-20 °C
Storage Comment:	Store at 4 °C for short term storage (1/2 weeks). Aliquot and store at -20 °C or -70 °C for long term storage.

Images



15% SDS-PAGE (3ug)

SDS-PAGE

Image 1. Figure annotation denotes ug of protein loaded and % gel used.