

Datasheet for ABIN935090 GPD1 Protein (AA 1-349)



[Go to Product page](#)

1 Image

Overview

Quantity:	100 µg
Target:	GPD1
Protein Characteristics:	AA 1-349
Origin:	Human
Source:	Escherichia coli (E. coli)
Protein Type:	Recombinant
Application:	SDS-PAGE (SDS)

Product Details

Sequence: MASKKVCIVG SGNWGSIAIK IVGGNAAQLA QFDRVMTMWV FEEDIGGKKL TEIINTQHEN
VKYLPGHKLP PNVVAVPDVV QAAEDADILI FVVPHQFIGK ICDQLKGHLK ANATGISLIK
GVDEGPNGLK LISEVIGERL GIPMSVLMGA NIASEVADEK FCETTIGCKD PAQQQLLKEL
MQTPNFRITV VQEVDTVEIC GALKNVVAVG AGFCDGLGFG DNTKAAVIRL GLMEMIAFAK
LFCSGPVSSA TFLESCGVAD LITTCYGGRN RKVAEAFART GKSIEQLEKE LLNGQKLQGP
ETARELYSIL QHKGLVDKFP LFMAVYKVCY EGQPVGEFIH CLQNHPEHM

Characteristics: Purified recombinant Human GPD1 protein
Expression System: E.coli

Purity: > 90 % pure

Target Details

Target: GPD1

Target Details

Alternative Name: GPD1 ([GPD1 Products](#))

Background: GPD1, also known as glycerol-3-phosphate dehydrogenase, is an enzyme that catalyzes the reduction of dihydroxyacetone phosphate to sn-glycerol 3-phosphate. Older terms for glycerol-3-phosphate dehydrogenase include alpha glycerol-3-phosphate dehydrogenase and glycerolphosphate dehydrogenase. However, GPD1 is not the same as glyceraldehyde 3-phosphate dehydrogenase (GAPDH) whose substrate is an aldehyde not an alcohol. Recombinant GPD1 protein was expressed in E. coli and purified by using conventional chromatography techniques.

Alternative Names: Gpd1 protein protein, GPD-1 protein, GPD2 protein, Glycerol-3-phosphate dehydrogenase protein, GPDH-C protein, Gdc-1 protein, EC 1.1.1.8 protein, Glycerol 3 phosphate dehydrogenase soluble protein, G3PD protein, Gdc1 protein, GPD-1, mKIAA4010., GPD 1, Glycerphosphate dehydrogenase protein, GPDH protein, Glycerol-3-phosphate dehydrogenase 1 (soluble) protein, FLJ26652 protein, protein, Glycerol 3 phosphate dehydrogenase cytosolic protein, cytoplasmic protein, soluble protein, Gpdc protein, Glycerol-3-phosphate dehydrogenase protein, MGPD protein, Gpd3 protein, GPD-C protein, Gdp1 protein, Glycerol 3 phosphate dehydrogenase 1 protein, MGC93453 protein, GPD1, Glycerol-3-phosphate dehydrogenase [NAD+] AI747587 protein, Glycerol-3-phosphate dehydrogenase [NAD+] protein, KIAA4010 protein, Gpdhc protein, GPD 1 protein

Molecular Weight: 37.5 kDa (349 AA)

Application Details

Application Notes: GPD1 protein has been used in SDS PAGE and may be suitable for use in other assays to be determined by the end user.

Restrictions: For Research Use only

Handling

Format: Liquid

Concentration: 1 mg/mL

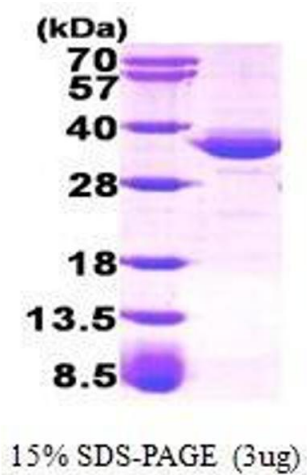
Buffer: Supplied as a liquid in 20 mM Tris-HCl buffer, pH 8.0, containing 10 % glycerol.

Handling Advice: Avoid repeated freeze/thaw cycles.

Storage: RT/-20 °C

Storage Comment: Store at 4 °C for short term storage (1/2 weeks). Aliquot and store at -20 °C or -70 °C for long

term storage.



SDS-PAGE

Image 1. Figure annotation denotes ug of protein loaded and % gel used.