

Datasheet for ABIN935094  
**CTBP1 Protein (AA 1-440)**



[Go to Product page](#)

1 Image

## Overview

Quantity:	100 µg
Target:	CTBP1
Protein Characteristics:	AA 1-440
Origin:	Human
Source:	Escherichia coli (E. coli)
Protein Type:	Recombinant
Application:	SDS-PAGE (SDS)

## Product Details

Sequence: MGSSHLLNKG LPLGVRPPIM NGPLHRPLV ALLDGRDCTV EMPILKDVAT VAFCDASTQ  
EIHEKVLNEA VGALMYHTIT LTREDLEKFK ALRIIVRIGS GFDNIDIKSA GDLGIAVCNV  
PAASVEETAD STLCHILNLY RRATWLHQAL REGTRVQSVE QIREVASGAA RIRGETLGII  
GLGRVGQAVA LRAKAFGFNV LFYDPYLSDG VERALGLQRV STLQDLLFHS DCVTLHCGLN  
EHNHHLINDF TVKQMRQGAF LVNTARGGLV DEKALAQALK EGRIRGAALD VHESEPFSS  
QGPKDAPNL ICTPHAAWYS EQASIEMREE AAREIRRAIT GRIPDSLKNC VNKDHLTAAT  
HWASMDPAVV HPELNAAAYR YPPGVVGVAP TGIPAAVEGI VPSAMSLSHG LPPVAHPPHA  
PSPGQTVKPE ADRDHASDQL

Characteristics: Purified recombinant Human CtBP1 protein  
Expression System: E.coli

Purity: > 90 % pure

## Target Details

---

Target:	CTBP1
Alternative Name:	CtBP1 ( <a href="#">CTBP1 Products</a> )
Background:	<p>C-terminal-binding protein 1 isoform 1, also known as CtBP1, is expressed from embryo to adult. This protein binds to the C-terminus of adenovirus E1A. It is a cellular phosphoprotein that associates with various proteins and functions as a corepressor of transcription. Also, CtBP1 associates in complexes with histone deacetylases (HDAC), the G9a histone methyltransferase, and LSD1 histone demethylase illustrating its role in transcriptional repression. Recombinant human CtBP1 was expressed in E. coli and purified by using conventional chromatography techniques.</p> <p>Alternative Names: CtBP 1, CtBP-1 protein, CtBP-1, CTBP protein, C-terminal-binding protein 1 isoform 1 C terminal binding protein 1 protein, CTBP1 protein, CtBP 1 protein, MGC104684., CtBP1, BARS protein</p>
Molecular Weight:	47.5 kDa (440 AA)
Pathways:	<a href="#">Retinoic Acid Receptor Signaling Pathway</a>

## Application Details

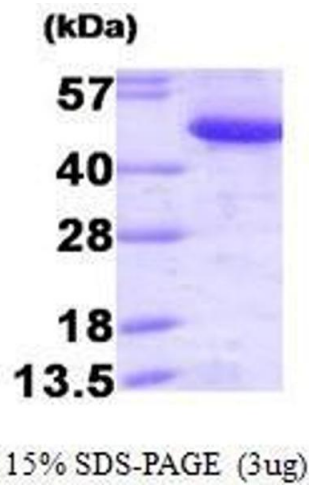
---

Application Notes:	CtBP1 protein has been used in SDS PAGE and may be suitable for use in other assays to be determined by the end user.
Restrictions:	For Research Use only

## Handling

---

Format:	Liquid
Concentration:	1 mg/mL
Buffer:	Supplied as a liquid in 20 mM Tris-HCl buffer, pH 8.0, containing 100 mM NaCl and 10 % glycerol.
Handling Advice:	Avoid repeated freeze/thaw cycles.
Storage:	RT/-20 °C
Storage Comment:	Store at 4 °C for short term storage (1/2 weeks). Aliquot and store at -20 °C or -70 °C for long term storage.



#### SDS-PAGE

**Image 1.** Figure annotation denotes ug of protein loaded and % gel used.