

Datasheet for ABIN935097
BAG1 Protein (AA 1-230)



[Go to Product page](#)

1 Image

Overview

Quantity:	100 µg
Target:	BAG1
Protein Characteristics:	AA 1-230
Origin:	Human
Source:	Escherichia coli (E. coli)
Protein Type:	Recombinant
Application:	SDS-PAGE (SDS)

Product Details

Sequence: MNRSQEVTRD EESTRSEEVV REEMAAAGLT VTVTHSNEKH DLHVTSQQGS SEPVVQDLAQ
VVEEVIGVPQ SFQKLIFKGG SLKEMETPLS ALGIQDGCRV MLIGKKNSPQ EEVELKCLKH
LEKSVEKIAD QLEELNKELT GIQQGFLPKD LQAEALCKLD RRVKATIEQF MKILEEIDTL
ILPENFKDSR LKRKGLVKKV QAFLAECDTV EQNICQETER LQSTNFALAE

Characteristics: Purified recombinant Human BAG1 protein
Expression System: E.coli

Purity: > 90 % pure

Target Details

Target: BAG1

Alternative Name: BAG1 ([BAG1 Products](#))

Background: BCL2-associated athanogene, also known as BAG1, is a member of the Bcl-2 family of proteins

Target Details

that play varied stimulatory or inhibitory roles in the regulation of programmed cell death. This functions in conjunction with Bcl-2 to inhibit apoptosis. Also, BAG1 has been implicated in age related neurodegenerative diseases as Alzheimer's. It is localized to the cytosol, nucleus or both. Recombinant human BAG1 was expressed in E. coli and purified by using conventional chromatography techniques.

Alternative Names: BAG-1 protein, BCL 2 binding athanogene 1 protein, BCL 2 Associated Athanogene 1 protein, BAG1, BAG 1 protein, HAP1 protein, BCL2-associated athanogene 1 Bag 1 protein, HAP protein, Glucocorticoid receptor-associated protein RAP46 protein, BCL2 associated athanogene protein, Haptoglobin protein, BAG-1, BCL 2 associated athanogene protein, BCL2 associated athanogene 1 protein, RAP 46., RAP46 protein, BAG 1, BAG family molecular chaperone regulator 1 protein

Molecular Weight:	25.9 kDa (230 AA)
-------------------	-------------------

Application Details

Application Notes:	BAG1 protein has been used in SDS PAGE and may be suitable for use in other assays to be determined by the end user.
--------------------	--

Restrictions:	For Research Use only
---------------	-----------------------

Handling

Format:	Liquid
---------	--------

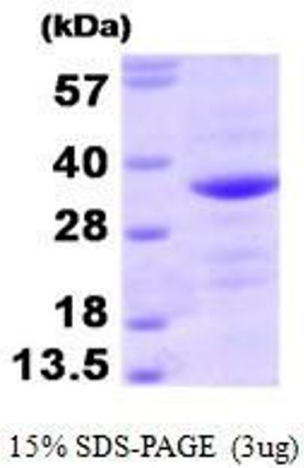
Concentration:	1 mg/mL
----------------	---------

Buffer:	Supplied as a liquid in 20 mM Tris-HCl buffer, pH 7.5, containing 100 mM NaCl and 10 % glycerol.
---------	--

Handling Advice:	Avoid repeated freeze/thaw cycles.
------------------	------------------------------------

Storage:	RT/-20 °C
----------	-----------

Storage Comment:	Store at 4 °C for short term storage (1/2 weeks). Aliquot and store at -20 °C or - 70 °C for long term storage.
------------------	---



SDS-PAGE

Image 1. Figure annotation denotes ug of protein loaded and % gel used.