

Datasheet for ABIN935100 **S100A8 Protein (AA 1-93)**



[Go to Product page](#)

1 Image

Overview

Quantity:	100 µg
Target:	S100A8
Protein Characteristics:	AA 1-93
Origin:	Human
Source:	Escherichia coli (E. coli)
Protein Type:	Recombinant
Application:	SDS-PAGE (SDS)

Product Details

Sequence:	MLTELEKALN SIIDVYHKYS LIKGNFHAVY RDDLKKLEET ECPQYIRKKG ADVWFKELDI NTDGA VNFQE FLILVIKMGV AAHKKSHEES HKE
Characteristics:	Purified recombinant Human S100 A8 protein Expression System: E.coli
Purity:	> 90 % pure

Target Details

Target:	S100A8
Alternative Name:	S100A8 (S100A8 Products)
Background:	S100 calcium binding protein A8, also known as MRP8, is a member of the S100 family, EF-hand superfamily of Calcium binding proteins. S100A8 proteins are localized in the cytoplasm and/or nucleus of a wide range of cells, and involved in the regulation of a number of cellular

Target Details

processes such as cell cycle progression and differentiation. It functions both intracellularly and extracellularly, where it binds to RAGE and CD36. Altered expression of this protein is associated with the disease cystic fibrosis. Recombinant human S100A8 was expressed in *E. coli* and purified by using conventional chromatography techniques.

Alternative Names: S 100, S100, Leukocyte L1 complex light chain protein, S 100 protein, BEE11 protein, CGLA protein, Neutrophil cytosolic 7 kDa protein protein, Migration inhibitory factor-related protein 8 protein, Calprotectin protein, S100 calcium binding protein A8 (calgranulin A) protein, S100A8 protein, Calprotectin L1L subunit protein, CP-10 protein, MA387 protein, p8 protein, CAGA protein, S-100 protein, Protein S100-A8 protein, Chemotactic cytokine CP-10 protein, NIF protein, MIF protein, A1323541 protein, L1Ag protein, S100A8/S100A9 complex protein, S100 calcium binding protein A8 60B8Ag protein, Calgranulin-A protein, MRP-8 protein, CFAG protein, Myeloid-related protein 8 protein, Cystic fibrosisprotein protein, B8Ag protein, Pro-inflammatory S100 cytokine protein, S-100, included protein, included protein, CAGA protein, Urinary stone protein band A.

Molecular Weight: 10.8 Da (93 AA)

Pathways: [Transition Metal Ion Homeostasis](#), [Positive Regulation of Endopeptidase Activity](#), [S100 Proteins](#)

Application Details

Application Notes: S100 protein has been used in SDS PAGE and may be suitable for use in other assays to be determined by the end user.

Restrictions: For Research Use only

Handling

Format: Liquid

Concentration: 0.5 mg/mL

Buffer: Supplied as a liquid in 20 mM Tris-HCl buffer, pH 8.0, containing 0 mM DTT, and 10 % glycerol.

Preservative: Dithiothreitol (DTT)

Precaution of Use: This product contains Dithiothreitol: a POISONOUS AND HAZARDOUS SUBSTANCE, which should be handled by trained staff only.

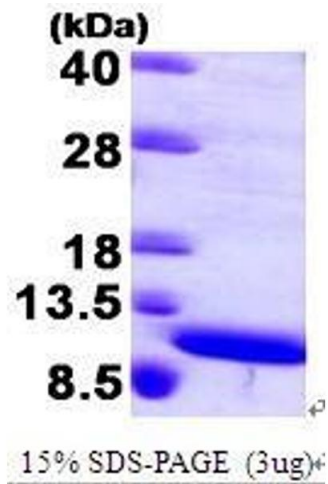
Handling Advice: Avoid repeated freeze/thaw cycles.

Storage: RT/-20 °C

Handling

Storage Comment: Store at 4 °C for short term storage (1/2 weeks). Aliquot and store at -20 °C or -70 °C for long term storage.

Images



SDS-PAGE

Image 1. Figure annotation denotes ug of protein loaded and % gel used.