

Datasheet for ABIN935103

Translin Protein (TSN) (AA 1-228)[Go to Product page](#)**1** Image

Overview

Quantity:	100 µg
Target:	Translin (TSN)
Protein Characteristics:	AA 1-228
Origin:	Human
Source:	Escherichia coli (E. coli)
Protein Type:	Recombinant
Application:	SDS-PAGE (SDS)

Product Details

Sequence:	MSVSEIFVEL QGFLAAEQDI REEIRKVVQS LEQTAREILT LLQGVHQGAG FQDIPKRCLK AREHFGTVKT HLTSLKTKFP AEQYYRFHEH WRFVLQRLVF LAAFVVYLET ETLVTREAVT EILGIEPDRE KGFHLDVEDY LSGVLILASE LSRLSVNSVT AGDYSRPLHI STFINELDSG FRLNLKNDS LRKRYDGLKY DVKKVEEVVY DLSIRGFNKE TAAACVEK
Characteristics:	Purified recombinant Human TSN protein Expression System: E.coli
Purity:	> 90 % pure

Target Details

Target:	Translin (TSN)
Alternative Name:	TSN (TSN Products)
Background:	Translin, also known as TSN, is a DNA and RNA binding protein which specifically recognizes

Target Details

conserved target sequences at the breakpoint junction of chromosomal translocations.

Translin forms a ring-shaped structure, which is responsible for DNA binding, and also contains a leucine zipper motif, which is thought to enable translin to form dimers. Translin exports specific mRNAs out of the nucleus, supported by its localization in both the nuclei and cytoplasm of neurons, and regulates their translation. Recombinant human Translin protein, was expressed in E. coli and purified by using conventional chromatography techniques.

Alternative Names: BCLF-1 protein, REHF-1 protein, RCHF1 protein, Translin protein, TBRBP protein, TRSLN

Molecular Weight: 26.1 kDa (228 AA)

Application Details

Application Notes: TSN protein has been used in SDS PAGE and may be suitable for use in other assays to be determined by the end user.

Restrictions: For Research Use only

Handling

Format: Liquid

Concentration: 1 mg/mL

Buffer: Supplied as a liquid in 20 mM Tris-HCl buffer, pH 8.0, containing 0 mM DTT, 10 % glycerol and 100 mM NaCl.

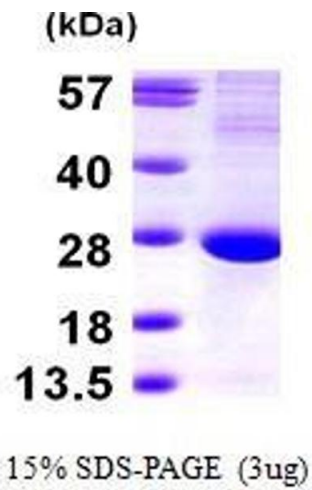
Preservative: Dithiothreitol (DTT)

Precaution of Use: This product contains Dithiothreitol: a POISONOUS AND HAZARDOUS SUBSTANCE, which should be handled by trained staff only.

Handling Advice: Avoid repeated freeze/thaw cycles.

Storage: RT/-20 °C

Storage Comment: Store at 4 °C for short term storage (1/2 weeks). Aliquot and store at -20 °C or -70 °C for long term storage.



SDS-PAGE

Image 1. Figure annotation denotes ug of protein loaded and % gel used.