

Datasheet for ABIN93881

Mouse IgM Isotype Control



[Go to Product page](#)

1 Image

Overview

Quantity:	100 µg
Target:	IgM
Host:	Mouse
Clonality:	Monoclonal
Application:	Isotype Control (IsoC), Flow Cytometry (FACS), ELISA, Western Blotting (WB), Immunohistochemistry (Frozen Sections) (IHC (fro)), Immunohistochemistry (Paraffin-embedded Sections) (IHC (p)), Immunocytochemistry (ICC), Immunoprecipitation (IP)

Product Details

Purpose:	Mouse IgM Isotype Control Purified
Clone:	PFR-03
Isotype:	IgM
Specificity:	This mouse IgM monoclonal antibody (clone PFR-03) reacts with undefined epitope on a plant pathogen.
No Cross-Reactivity:	Human, Mouse, Pig, Rat
Purification:	Purified by sequential steps of physicochemical fractionation (differential precipitation and solid-phase chromatography methods).
Purity:	> 95 % (by SDS-PAGE)

Target Details

Target:	IgM
---------	-----

Target Details

Abstract: [IgM Products](#)

Target Type: Antibody

Application Details

Application Notes: Negative control: The reagent is intended as an isotype control to establish the amount of non-specific antibody binding. For your particular experiment, use the same concentration of this control antibody as the recommended working concentration of the antigen-specific antibody. Also, when working with prediluted antibodies, dilute the isotype control to the same concentration as is the concentration of the antigen-specific antibody in the prediluted antibody solution you are using. If under particular experimental conditions the background signal of the isotype control is too high (usually when working concentrations of used antibodies are above 10 µg/mL of incubation mixture), change the conditions of your experiment to reduce the background.

Restrictions: For Research Use only

Handling

Concentration: 1 mg/mL

Buffer: Tris buffered saline (TBS), pH 8.0, 15 mM sodium azide

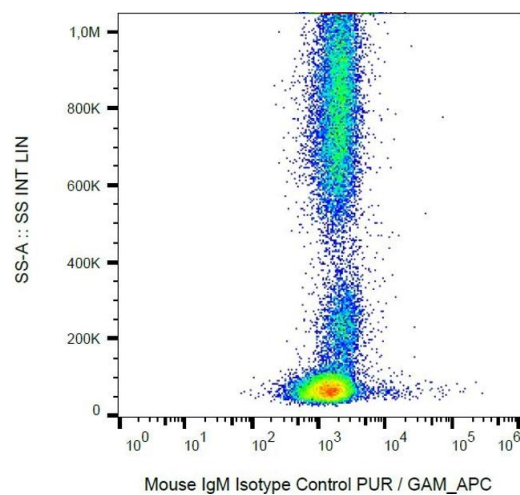
Preservative: Sodium azide

Precaution of Use: This product contains Sodium azide: a POISONOUS AND HAZARDOUS SUBSTANCE which should be handled by trained staff only.

Handling Advice: **Do not freeze.**

Storage: 4 °C

Storage Comment: Store at 2-8°C. Do not freeze.



Flow Cytometry

Image 1. Flow cytometry analysis: Example of nonspecific mouse IgM (PFR-03) PE signal on human peripheral blood, surface staining, 3 µg/mL.