

Datasheet for ABIN93945
anti-SEMA7A antibody[Go to Product page](#)

2 Images

2 Publications

Overview

Quantity:	0.1 mg
Target:	SEMA7A
Reactivity:	Human
Host:	Mouse
Clonality:	Monoclonal
Conjugate:	This SEMA7A antibody is un-conjugated
Application:	Western Blotting (WB), Flow Cytometry (FACS), Immunoprecipitation (IP)

Product Details

Immunogen:	HPB-ALL human T cell line
Clone:	MEM-150
Isotype:	IgM
Specificity:	The antibody MEM-150 reacts with CD108 (JMH blood group antigen), a 80 kDa GPI-anchored extracellular glycoprotein expressed on various cell types including erythrocytes, lymphoblasts, at low levels it is present on circulating lymphocytes.
Cross-Reactivity (Details):	Human
Purification:	Purified by sequential steps of physicochemical fractionation (differential precipitation and solid-phase chromatography methods).
Purity:	> 95 % (by SDS-PAGE)

Target Details

Target:	SEMA7A
Alternative Name:	CD108 (SEMA7A Products)
Background:	Semaphorin 7A (John Milton Hagen blood group),CD108 (Sema7A) is a GPI-anchored semaphorin family member, which enhances central and peripheral axonal growth and is required for proper axon track formation during ebyrogenesis. CD108 also regulates osteoclast differentiation and pre-osteoblastic cell migration, and in immune system affects cell proliferation, chemotaxis and cytokine release. On erythrocytes CD108 defines the JMH (John-Milton-Hagen) human blood group. CD108 signalizes through its receptors –, plexin C1 and beta1 integrins.,Semaphorin 7a, JMH blood group antigen, SEMAL, SEMAK1
Gene ID:	8482
UniProt:	O75326
Pathways:	Positive Regulation of Immune Effector Process , Production of Molecular Mediator of Immune Response , Regulation of Cell Size

Application Details

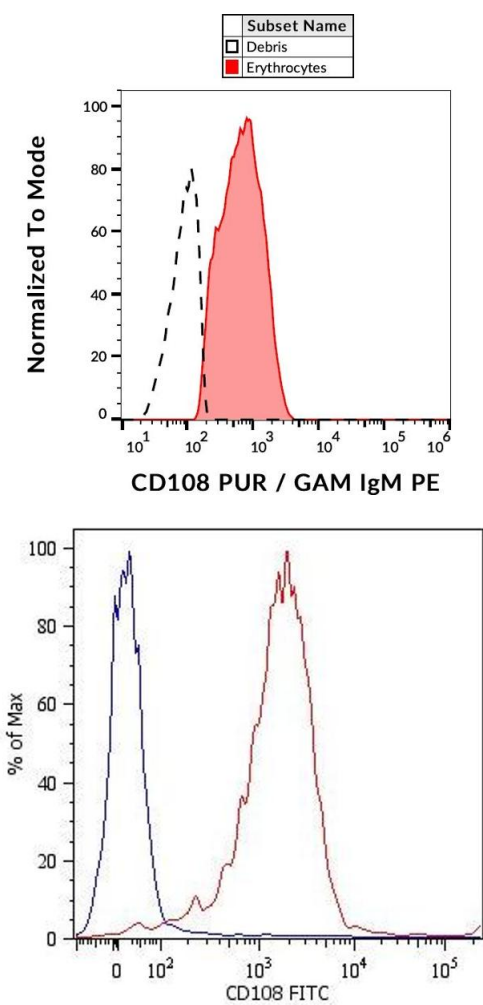
Application Notes:	Flow cytometry: Recommended dilution: 4 µg/mL. Western blotting: Non-reducing conditions.
Restrictions:	For Research Use only

Handling

Concentration:	1 mg/mL
Buffer:	Tris buffered saline (TBS), pH 8.0, 15 mM sodium azide
Preservative:	Sodium azide
Precaution of Use:	This product contains Sodium azide: a POISONOUS AND HAZARDOUS SUBSTANCE which should be handled by trained staff only.
Handling Advice:	Do not freeze.
Storage:	4 °C
Storage Comment:	Store at 2-8°C. Do not freeze.

Product cited in: Angelisová, Drbal, Cerný, Hilgert, Horejsí: "Characterization of the human leukocyte GPI-anchored glycoprotein CDw108 and its relation to other similar molecules." in: **Immunobiology**, Vol. 200, Issue 2, pp. 234-45, (1999) ([PubMed](#)).

Mudad, Rao, Angelisova, Horejsi, Telen: "Evidence that CDw108 membrane protein bears the JMH blood group antigen." in: **Transfusion**, Vol. 35, Issue 7, pp. 566-70, (1995) ([PubMed](#)).



Flow Cytometry

Image 1. Flow cytometry analysis (surface staining) of human peripheral blood with anti-human CD108 (MEM-150) purified, GAM IgM PE.

Flow Cytometry

Image 2. Surface staining of HPB-ALL human peripheral blood T cell leukemia cell line with anti-human CD108 (MEM-150) FITC. Total viable cells were used for analysis.