

Datasheet for ABIN93982  
**anti-CD147 antibody (Biotin)**



[Go to Product page](#)

1 Image

2 Publications

## Overview

Quantity:	100 µg
Target:	CD147 (BSG)
Reactivity:	Human
Host:	Mouse
Clonality:	Monoclonal
Conjugate:	This CD147 antibody is conjugated to Biotin
Application:	Western Blotting (WB), Flow Cytometry (FACS), Immunohistochemistry (Paraffin-embedded Sections) (IHC (p)), Immunoprecipitation (IP)

## Product Details

Purpose:	Anti-Hu CD147 Biotin
Immunogen:	Protein A-CR purified soluble recombinant form of CD147, CD147Rg, which consists of the cDNA coding for the hinge region, CH2-and CH3 domain of human IgG1 (CD147Rg is secreted by transfectants as a dimer).
Clone:	MEM-M6-1
Isotype:	IgG1
Specificity:	The antibody MEM-M6/1 recognizes an extracellular epitope in the N-terminal Ig domain (D1) of CD147 (Neurothelin), a 50-60 kDa type I transmembrane glycoprotein primarily expressed on all leukocytes, red blood cells, platelets and endothelial cells, it is not expressed by resting lymphocytes. The antibody MEM-M6/1 is a high-affinity antibody capable of binding to unstimulated peripheral blood T cells.

## Product Details

Cross-Reactivity (Details): Human

Purification: Purified antibody is conjugated with biotin LC-NHS ester under optimum conditions and unconjugated antibody and free biotin are removed by size-exclusion chromatography.

## Target Details

Target: CD147 (BSG)

Alternative Name: CD147 ([BSG Products](#))

Background: Basigin (Ok blood group),CD147 (basigin, neurothelin, OX-47, 5A11, CE9, M6) also known as EMMPRIN (extracellular matrix metalloproteinase inducer) or TCSF (tumour cell-derived collagenase-stimulatory factor) is an ubiquitously expressed cell surface protein with multiple glycosylated forms. The highest level of CD147 expression is on metabolically active cells, such as lymphoblasts, inflammatory cells, brown adipocytes and malignant tumour cells. CD147 has multiple functions, including facilitating of cell surface expression of monocarboxylate transporter proteins and extracellular matrix metalloproteinases, regulation of integrin functions, it plays roles in cell development and activation, fetal development or retinal function.,Neurothelin, Basigin, LAM6, CSF, 5F7, TCSF, BSG, TCSF, Emprin, OK blood group

Gene ID: 682

UniProt: [P35613](#)

Pathways: [S100 Proteins](#)

## Application Details

Application Notes: Flow cytometry: Recommended dilution: 8 µg/mL.

Restrictions: For Research Use only

## Handling

Concentration: 1 mg/mL

Buffer: Phosphate buffered saline (PBS), pH 7.4, 15 mM sodium azide

Preservative: Sodium azide

Precaution of Use: This product contains Sodium azide: a POISONOUS AND HAZARDOUS SUBSTANCE which should be handled by trained staff only.

Handling Advice: **Do not freeze.**

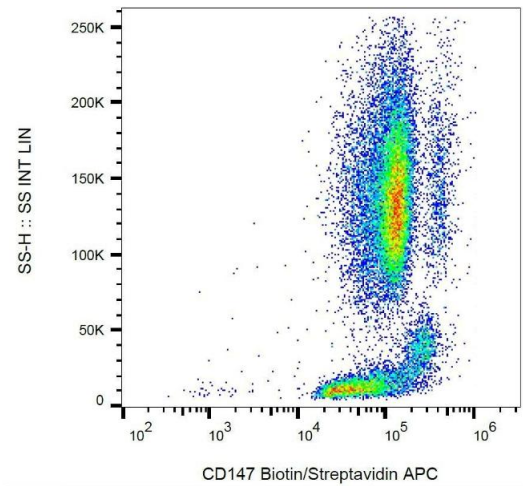
Handling

	Avoid prolonged exposure to light.
Storage:	4 °C
Storage Comment:	Store at 2-8°C. Do not freeze.

Publications

Product cited in:	Schatzlmaier, Supper, Göschl, Zwirzitz, Eckerstorfer, Ellmeier, Huppa, Stockinger: "Rapid multiplex analysis of lipid raft components with single-cell resolution." in: <b>Science signaling</b> , Vol. 8, Issue 395, pp. rs11, (2015) ( <a href="#">PubMed</a> ).
	Koch, Staffler, Hüttinger, Hilgert, Prager, Cerný, Steinlein, Majdic, Horejsí, Stockinger: "T cell activation-associated epitopes of CD147 in regulation of the T cell response, and their definition by antibody affinity and antigen density." in: <b>International immunology</b> , Vol. 11, Issue 5, pp. 777-86, (1999) ( <a href="#">PubMed</a> ).

Images



**Flow Cytometry**

**Image 1.** Surface staining of human peripheral blood with anti-human CD147 (MEM-M6/1) biotin.