

Datasheet for ABIN93983
anti-CD147 antibody (FITC)



[Go to Product page](#)

1 Image **2** Publications

Overview

Quantity:	100 tests
Target:	CD147 (BSG)
Reactivity:	Human
Host:	Mouse
Clonality:	Monoclonal
Conjugate:	This CD147 antibody is conjugated to FITC
Application:	Flow Cytometry (FACS)

Product Details

Purpose:	Anti-Hu CD147 FITC
Immunogen:	Protein A-CR purified soluble recombinant form of CD147, CD147Rg, which consists of the cDNA coding for the hinge region, CH2-and CH3 domain of human IgG1 (CD147Rg is secreted by transfectants as a dimer).
Clone:	MEM-M6-1
Isotype:	IgG1
Specificity:	The antibody MEM-M6/1 recognizes an extracellular epitope in the N-terminal Ig domain (D1) of CD147 (Neurothelin), a 50-60 kDa type I transmembrane glycoprotein primarily expressed on all leukocytes, red blood cells, platelets and endothelial cells, it is not expressed by resting lymphocytes. The antibody MEM-M6/1 is a high-affinity antibody capable of binding to unstimulated peripheral blood T cells.
Cross-Reactivity (Details):	Human

Product Details

Purification:	Purified antibody is conjugated with fluorescein isothiocyanate (FITC) under optimum conditions and unconjugated antibody and free fluorochrome are removed by size-exclusion chromatography.
---------------	---

Target Details

Target:	CD147 (BSG)
Alternative Name:	CD147 (BSG Products)
Background:	Basigin (Ok blood group),CD147 (basigin, neurothelin, OX-47, 5A11, CE9, M6) also known as EMMPRIN (extracellular matrix metalloproteinase inducer) or TCSF (tumour cell-derived collagenase-stimulatory factor) is an ubiquitously expressed cell surface protein with multiple glycosylated forms. The highest level of CD147 expression is on metabolically active cells, such as lymphoblasts, inflammatory cells, brown adipocytes and malignant tumour cells. CD147 has multiple functions, including facilitating of cell surface expression of monocarboxylate transporter proteins and extracellular matrix metalloproteinases, regulation of integrin functions, it plays roles in cell development and activation, fetal development or retinal function.,Neurothelin, Basigin, LAM6, CSF, 5F7, TCSF, BSG, TCSF, Emprin, OK blood group
Gene ID:	682
UniProt:	P35613
Pathways:	S100 Proteins

Application Details

Application Notes:	Flow cytometry: The reagent is designed for analysis of human blood cells using 20 µL reagent / 100 µL of whole blood or 10 ⁶ cells in a suspension. The content of a vial (2 ml) is sufficient for 100 tests.
Restrictions:	For Research Use only

Handling

Reconstitution:	No reconstitution is necessary.
Buffer:	Stabilizing phosphate buffered saline (PBS), pH 7.4, 15 mM sodium azide
Preservative:	Sodium azide
Precaution of Use:	This product contains Sodium azide: a POISONOUS AND HAZARDOUS SUBSTANCE which

Handling

should be handled by trained staff only.

Handling Advice: **Do not freeze.**
Avoid prolonged exposure to light.

Storage: 4 °C

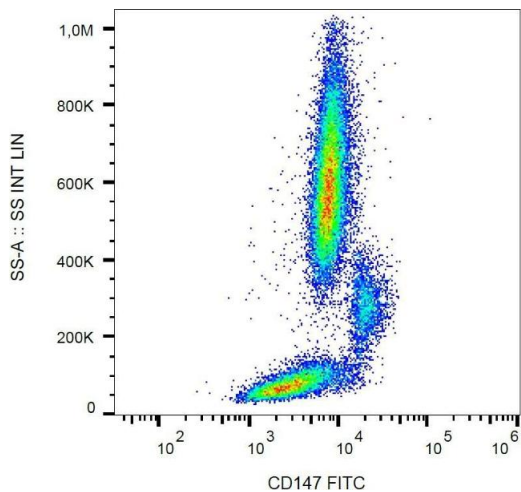
Storage Comment: Store at 2-8°C. Protect from prolonged exposure to light. Do not freeze.

Publications

Product cited in: Schatzlmaier, Supper, Göschl, Zwirzitz, Eckerstorfer, Ellmeier, Huppa, Stockinger: "Rapid multiplex analysis of lipid raft components with single-cell resolution." in: **Science signaling**, Vol. 8, Issue 395, pp. rs11, (2015) ([PubMed](#)).

Koch, Staffler, Hüttinger, Hilgert, Prager, Cerný, Steinlein, Majdic, Horejsí, Stockinger: "T cell activation-associated epitopes of CD147 in regulation of the T cell response, and their definition by antibody affinity and antigen density." in: **International immunology**, Vol. 11, Issue 5, pp. 777-86, (1999) ([PubMed](#)).

Images



Flow Cytometry

Image 1. Surface staining of human peripheral blood with anti-human CD147 (MEM-M6/1) FITC.