

Datasheet for ABIN94008  
**anti-Integrin beta 2 antibody (FITC)**

5 Images

5 Publications

[Go to Product page](#)

## Overview

Quantity:	100 tests
Target:	Integrin beta 2 (ITGB2)
Reactivity:	Human
Host:	Mouse
Clonality:	Monoclonal
Conjugate:	This Integrin beta 2 antibody is conjugated to FITC
Application:	Flow Cytometry (FACS)

## Product Details

Immunogen:	Leukocytes of a patient suffering from a LGL-type leukemia.
Clone:	MEM-48
Isotype:	IgG1
Specificity:	The antibody MEM-48 recognizes an extracellular epitope involving residues 534-546 in cysteine-rich repeat 3 of the CD18 antigen (integrin beta2 subunit, beta2 integrin). CD18 is a 90-95 kDa type I transmembrane protein expressed on all leukocytes.
No Cross-Reactivity:	Dog
Cross-Reactivity (Details):	Human
Purification:	Purified antibody is conjugated with fluorescein isothiocyanate (FITC) under optimum conditions and unconjugated antibody and free fluorochrome are removed by size-exclusion chromatography.

## Target Details

Target:	Integrin beta 2 (ITGB2)
Alternative Name:	CD18 ( <a href="#">ITGB2 Products</a> )
Background:	<p>Integrin subunit beta 2,CD18, integrin beta2 subunit, forms heterodimers with four types of CD11 Molecule to constitute leukocyte (beta2) integrins: alphaLbeta2 (CD11a/CD18, LFA-1), alphaMbeta2 (CD11b/CD18, Mac-1, CR3), alphaXbeta2 (CD11c/CD18) and alphaDbeta2 (CD11d/CD18). In most cases, the response mediated by the integrin is a composite of the functions of its individual subunits. These integrins are essential for proper leukocyte migration, mediating intercellular contacts. Absence of CD18 leads to leukocyte adhesion deficiency-1, severe reduction of CD18 expression leads to the development of a psoriasiform skin disease. CD18 is also a target of Mannheimia (Pasteurella) haemolytica leukotoxin and is sufficient to mediate leukotoxin-mediated cytolysis.,Integrin beta2, Complement receptor C3 subunit beta, ITGB2</p>
Gene ID:	3689
UniProt:	<a href="#">P05107</a>
Pathways:	<a href="#">NF-kappaB Signaling</a> , <a href="#">Activation of Innate immune Response</a> , <a href="#">Toll-Like Receptors Cascades</a> , <a href="#">Activated T Cell Proliferation</a>

## Application Details

Application Notes:	Flow cytometry: The reagent is designed for analysis of human blood cells using 20 µL reagent / 100 µL of whole blood or 10 <sup>6</sup> cells in a suspension. The content of a vial (2 ml) is sufficient for 100 tests.
Comment:	The purified antibody is conjugated with Fluorescein isothiocyanate (FITC) under optimum conditions. The reagent is free of unconjugated FITC and adjusted for direct use. No reconstitution is necessary.
Restrictions:	For Research Use only

## Handling

Reconstitution:	No reconstitution is necessary.
Buffer:	Stabilizing phosphate buffered saline (PBS), pH 7.4, 15 mM sodium azide
Preservative:	Sodium azide
Precaution of Use:	This product contains Sodium azide: a POISONOUS AND HAZARDOUS SUBSTANCE which

## Handling

---

should be handled by trained staff only.

---

### Handling Advice:

**Do not freeze.**

Avoid prolonged exposure to light.

---

### Storage:

4 °C

---

### Storage Comment:

Store at 2-8°C. Protect from prolonged exposure to light. Do not freeze.

---

## Publications

---

### Product cited in:

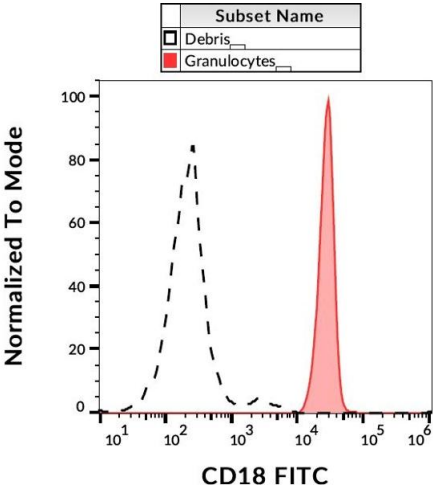
Kuttruff, Koch, Kelp, Pawelec, Rammensee, Steinle: "NKp80 defines and stimulates a reactive subset of CD8 T cells." in: **Blood**, Vol. 113, Issue 2, pp. 358-69, (2009) ([PubMed](#)).

Garnotel, Rittié, Poitevin, Monboisse, Nguyen, Potron, Maquart, Randoux, Gillery: "Human blood monocytes interact with type I collagen through alpha x beta 2 integrin (CD11c-CD18, gp150-95)." in: **Journal of immunology (Baltimore, Md. : 1950)**, Vol. 164, Issue 11, pp. 5928-34, (2000) ([PubMed](#)).

Stefanová, Horejsí: "Association of the CD59 and CD55 cell surface glycoproteins with other membrane molecules." in: **Journal of immunology (Baltimore, Md. : 1950)**, Vol. 147, Issue 5, pp. 1587-92, (1991) ([PubMed](#)).

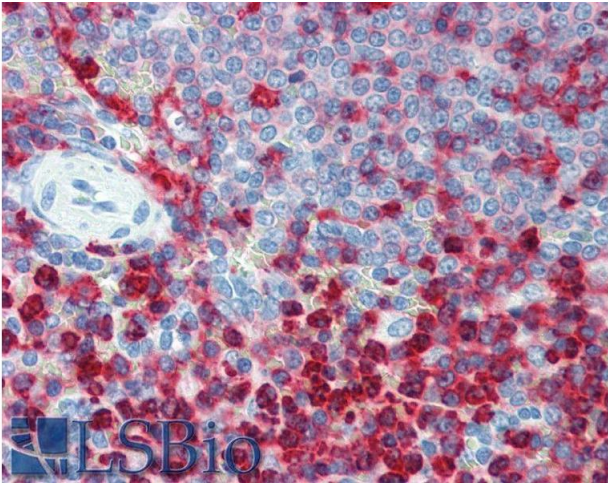
Bazil, Stefanová, Hilgert, Kristofová, Van?k, Horejsí: "Monoclonal antibodies against human leucocyte antigens. IV. Antibodies against subunits of the LFA-1 (CD11a/CD18) leucocyte-adhesion glycoprotein." in: **Folia biologica**, Vol. 36, Issue 1, pp. 41-50, (1990) ([PubMed](#)).

Larson, Springer: "Structure and function of leukocyte integrins." in: **Immunological reviews**, Vol. 114, pp. 181-217, (1990) ([PubMed](#)).



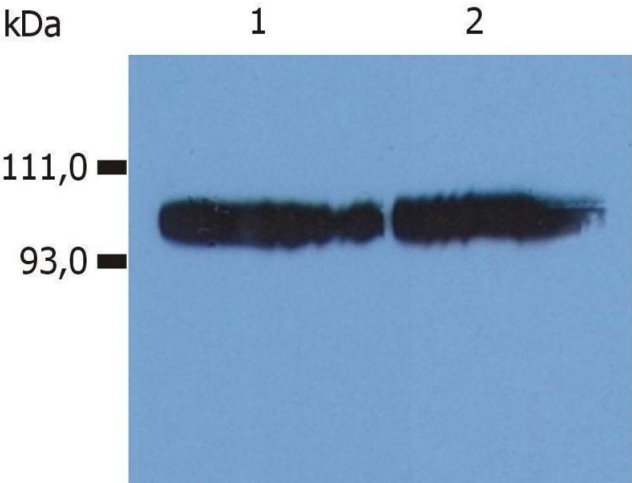
Flow Cytometry

**Image 1.** Flow cytometry analysis (surface staining) of human peripheral blood with anti-CD18 (MEM-48) FITC.



Immunohistochemistry

**Image 2.** Immunohistochemistry staining of human spleen (paraffin sections) using anti-CD18 (Commercially tested by LifeSpan BioSciences).



Western Blotting

**Image 3.** Western Blotting analysis (non-reducing conditions) of whole cell lysate using anti-human CD18 (). Lane 1: KG-1a human acute myeloid leukemia cell line Lane 2: HPB-ALL human peripheral blood T cell leukemia cell line

Please check the [product details page](#) for more images. Overall 5 images are available for ABIN94008.