

Datasheet for ABIN94034

anti-CD22 antibody**3** Images[Go to Product page](#)

Overview

Quantity:	0.1 mg
Target:	CD22
Reactivity:	Human, Non-Human Primate
Host:	Mouse
Clonality:	Monoclonal
Conjugate:	This CD22 antibody is un-conjugated
Application:	Flow Cytometry (FACS), Western Blotting (WB), Immunoprecipitation (IP)

Product Details

Immunogen:	Raji Burkitt's lymphoma cell line
Clone:	MEM-01
Isotype:	IgG1
Specificity:	The antibody MEM-01 reacts with an extracellular epitope of CD22 (BL-CAM), a 130 kDa type I transmembrane glycoprotein (immunoglobulin superfamily) expressed in the cytoplasm of pro-B and pre-B lymphocytes, and on the surface of mature and activated B lymphocytes, it is lost on plasma cells, peripheral blood T lymphocytes, granulocytes and monocytes. The antibody MEM-01 cross-blocks the antibody OTH228 that recognizes uniquely epitope "E", it does not cross-block antibodies RFB-4, CLB22/1 and CLB-BLy1.
Cross-Reactivity (Details):	Human, Non-Human Primates
Purification:	Purified by protein-A affinity chromatography.
Purity:	> 95 % (by SDS-PAGE)

Target Details

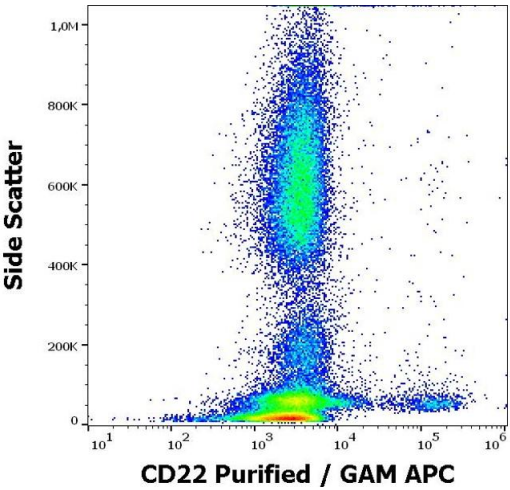
Target:	CD22
Alternative Name:	CD22 (CD22 Products)
Background:	<p>CD22 Molecule,CD22, also known as Siglec-2 (sialic acid-binding immunoglobulin-like lectin-2) is a transmembrane glycoprotein binding alpha2,6-linked sialic acid-bearing ligands.</p> <p>Intracellular domain of CD22 recruits protein tyrosine phosphatase SHP-1 through the immunoreceptor tyrosine-based inhibitory motifs (ITIMs), thus setting a treshold for B cell receptor-mediated activation. CD22 also regulates B-cell response by involvement in controlling the CD19/CD21-Src-family protein tyrosine kinase amplification pathway and CD40 signaling.</p> <p>CD22 exhibits hallmarks of clathrin-mediated endocytic pathway.,SIGLEC2, SIGLEC-2</p>
Gene ID:	933
UniProt:	P20273

Application Details

Application Notes:	<p>Flow cytometry: Recommended dilution: 2-4 µg/mL.</p> <p>Western blotting: Recommended dilution: 2-4 µg/mL, 120 min on vertical incubator, positive control: RAJI human lymphoma cell line. The antibody MEM-01 stains only the zone corresponding to 140 kDa, but not the weaker 130 kDa zone (stained by several CD22 antibodies recognizing both isoforms).</p>
Restrictions:	For Research Use only

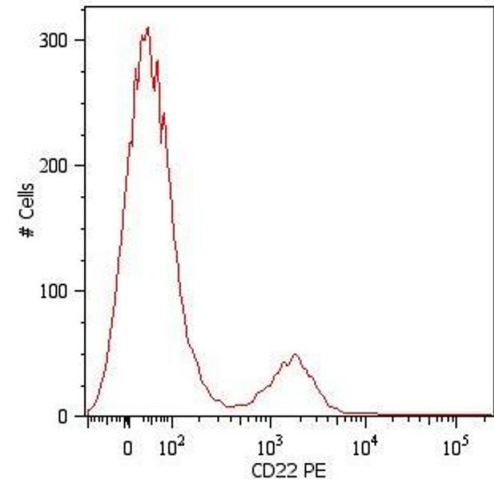
Handling

Concentration:	1 mg/mL
Buffer:	Phosphate buffered saline (PBS), pH 7.4, 15 mM sodium azide
Preservative:	Sodium azide
Precaution of Use:	This product contains Sodium azide: a POISONOUS AND HAZARDOUS SUBSTANCE which should be handled by trained staff only.
Handling Advice:	Do not freeze.
Storage:	4 °C
Storage Comment:	Store at 2-8°C. Do not freeze.



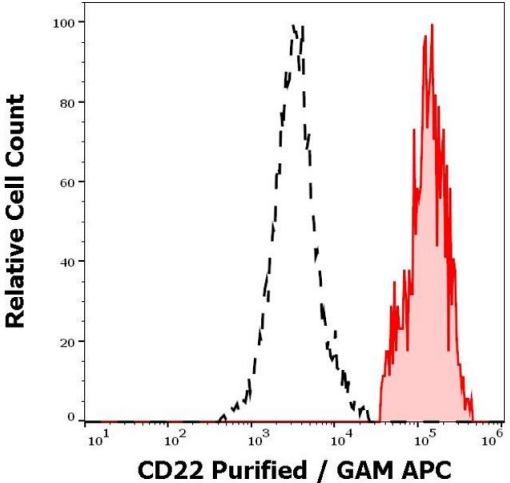
Flow Cytometry

Image 1. Flow cytometry surface staining pattern of human peripheral whole blood stained using anti-human CD22 (MEM-01) purified antibody (concentration in sample 0,6 µg/mL, GAM APC).



Flow Cytometry

Image 2. Surface staining of human peripheral blood cells with anti-CD22 (MEM-01) PE. Cells in the lymphocyte gate were used for analysis.



Flow Cytometry

Image 3. Separation of human CD22 positive lymphocytes (red-filled) from human CD22 negative lymphocytes (black-dashed) in flow cytometry analysis (surface staining) of peripheral whole blood stained using anti-human CD22 (MEM-01) purified antibody (concentration in sample 0,6 µg/mL, GAM APC).