



[Go to Product page](#)

Datasheet for ABIN94042

anti-CD235ab antibody (N-Term) (PE)

1 Image

Overview

Quantity:	100 tests
Target:	CD235ab (CD235a + CD235b)
Binding Specificity:	N-Term
Reactivity:	Human
Host:	Mouse
Clonality:	Monoclonal
Conjugate:	This CD235ab antibody is conjugated to PE
Application:	Flow Cytometry (FACS)

Product Details

Immunogen:	Synthetic peptide (Human, N-terminal)
Clone:	HIR2
Isotype:	IgG2b
Specificity:	The mouse monoclonal antibody HIR2 recognizes an epitope within the N-terminal (extracellular) portion of CD235a (glycophorin A) and CD235b (glycophorin B). Its antigen is expressed on early erythroblasts, late erythroblasts, erythroblasts, mature erythrocytes and the cells of erythroid cell lines K562 and HEL, but not on all other cells.
Cross-Reactivity (Details):	Human
Purification:	Purified antibody is conjugated with R-phycoerythrin (PE) under optimum conditions. Unconjugated antibody and free fluorochrome are removed by size-exclusion chromatography.

Target Details

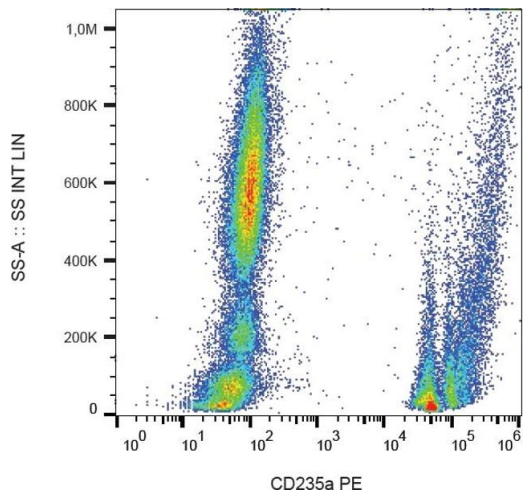
Target:	CD235ab (CD235a + CD235b)
Alternative Name:	CD235ab (CD235a + CD235b Products)
Background:	CD235a (glycophorin A, GPA) is a transmembrane sialoglycoprotein expressed on erythrocytes and their precursors. Similarly to CD235b (glycophorin B, GPB), these molecules provide the cells with a large mucin-like surface, which minimalizes aggregation between erythrocytes in the circulation. GPA is the carrier of blood group M and N specificities, while GPB accounts for S, s and U specificities. CD235a is a receptor of Hsa, a Streptococcus adhesin.,Glycophorin A/B, GYPA/B, GPA/B, PAS-2/3, Sialoglycoprotein alpha/beta, GPSAT, GPErik, MSN blood group

Application Details

Application Notes:	Flow cytometry: The reagent is designed for analysis of human blood cells using 20 µL reagent / 100 µL of whole blood or 10 ⁶ cells in a suspension. The content of a vial (2 ml) is sufficient for 100 tests.
Comment:	The purified antibody is conjugated with R-Phycoerythrin (PE) under optimum conditions. The conjugate is purified by size-exclusion chromatography and adjusted for direct use. No reconstitution is necessary.
Restrictions:	For Research Use only

Handling

Reconstitution:	No reconstitution is necessary.
Buffer:	Stabilizing phosphate buffered saline (PBS), pH 7.4, 15 mM sodium azide
Preservative:	Sodium azide
Precaution of Use:	This product contains Sodium azide: a POISONOUS AND HAZARDOUS SUBSTANCE which should be handled by trained staff only.
Handling Advice:	Do not freeze. Avoid prolonged exposure to light.
Storage:	4 °C
Storage Comment:	Store at 2-8°C. Protect from prolonged exposure to light. Do not freeze.



Flow Cytometry

Image 1. Flow cytometry analysis (surface staining) of human peripheral blood with anti-CD235a (HIR2) PE.