

Datasheet for ABIN940551

**anti-SLC6A8 antibody (Internal Region)****2** Images[Go to Product page](#)

## Overview

Quantity:	100 µg
Target:	SLC6A8
Binding Specificity:	Internal Region
Reactivity:	Human, Mouse
Host:	Goat
Clonality:	Polyclonal
Conjugate:	This SLC6A8 antibody is un-conjugated
Application:	Western Blotting (WB), ELISA, Immunohistochemistry (IHC)

## Product Details

Purpose:	Creatine transporter 1 / SLC6A8
Immunogen:	Peptide with sequence ASLANLTCDQLADRR, from the internal region of the protein sequence according to NP_005620.1, NP_001136277.1, NP_001136278.1.
Sequence:	ASLANLTCDQ LADRR
Isotype:	IgG
Specificity:	This antibody is expected to recognize all reported isoforms (NP_005620.1, NP_001136277.1, NP_001136278.1).
Cross-Reactivity:	Cow, Dog, Human, Mouse, Pig, Rat
Purification:	Purified from goat serum by ammonium sulphate precipitation followed by antigen affinity chromatography using the immunizing peptide.

## Product Details

Grade: Verified

## Target Details

Target: SLC6A8

Alternative Name: SLC6A8 ([SLC6A8 Products](#))

Background: SLC6A8, solute carrier family 6 (neurotransmitter transporter, creatine), member 8, CRT, CRTR, CT1, MGC87396, creatine transporter 1, creatine transporter SLC6A8, sodium- and chloride-dependent creatine transporter 1, solute carrier family 6 member 8

Gene ID: 6535, 102857, 50690

NCBI Accession: [NP\\_005620](#), [NP\\_001136277](#), [NP\\_001136278](#)

Pathways: [Retinoic Acid Receptor Signaling Pathway](#), [Intracellular Steroid Hormone Receptor Signaling Pathway](#), [Regulation of Intracellular Steroid Hormone Receptor Signaling](#), [Nuclear Hormone Receptor Binding](#), [ER-Nucleus Signaling](#), [Unfolded Protein Response](#)

## Application Details

Application Notes: Immunohistochemistry: Paraffin embedded Human Kidney. Recommended concentration: 5 µg/mL.  
Western Blot: Approx 70 kDa band observed in Mouse Heart lysates (calculated MW of 71.0 kDa according to Mouse NP\_598748.1). Recommended concentration: 0.1-0.3 µg/mL.  
Primary incubation was 1 hour.  
Peptide ELISA: antibody detection limit dilution 1:8000.

Restrictions: For Research Use only

## Handling

Format: Liquid

Concentration: 0.5 mg/mL

Buffer: Supplied at 0.5 mg/mL in Tris saline, 0.02 % sodium azide, pH 7.3 with 0.5 % bovine serum albumin.

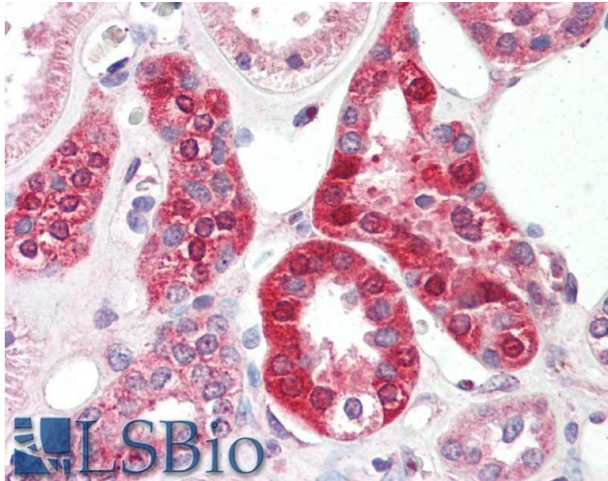
Preservative: Sodium azide

Precaution of Use: This product contains Sodium azide: a POISONOUS AND HAZARDOUS SUBSTANCE which should be handled by trained staff only.

## Handling

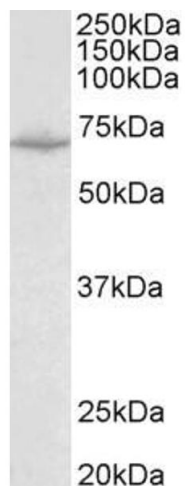
Handling Advice:	Minimize freezing and thawing.
Storage:	-20 °C
Storage Comment:	Aliquot and store at -20°C, with minimal freeze/thawing. A working aliquot may be refrigerated at 4°C for a few weeks and still remain viable.

## Images



### Immunohistochemistry

**Image 1.** ABIN940551 (5µg/ml) staining of paraffin embedded Human Kidney. Steamed antigen retrieval with citrate buffer pH 6, AP-staining.



### Western Blotting

**Image 2.** Antibody (0.1µg/ml) staining of Mouse Heart lysate (35µg protein in RIPA buffer). Primary incubation was 1 hour. Detected by chemiluminescence.