



[Go to Product page](#)

Datasheet for ABIN940556  
**anti-KIAA0319 antibody (Internal Region)**

1 Image

Overview

Quantity:	100 µg
Target:	KIAA0319
Binding Specificity:	Internal Region
Reactivity:	Human
Host:	Goat
Clonality:	Polyclonal
Conjugate:	This KIAA0319 antibody is un-conjugated
Application:	ELISA, Immunohistochemistry (IHC)

Product Details

Purpose:	KIAA0319
Immunogen:	Peptide with sequence C-QLTEQRKDTLVRQ, from the internal region of the protein sequence according to NP_055624.2.
Sequence:	QLTEQRKDTL VRQ
Isotype:	IgG
Cross-Reactivity:	Human
Purification:	Purified from goat serum by ammonium sulphate precipitation followed by antigen affinity chromatography using the immunizing peptide.
Grade:	Verified

## Target Details

---

Target:	KIAA0319
Alternative Name:	KIAA0319 ( <a href="#">KIAA0319 Products</a> )
Background:	KIAA0319, KIAA0319, HGNC:21580, DLX2, DYLX2, DYX2, OTTHUMP00000039403, MGC176717
Gene ID:	9856
NCBI Accession:	<a href="#">NP_055624</a>

## Application Details

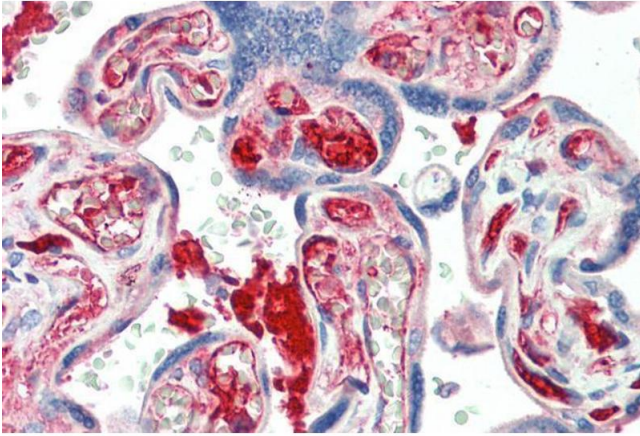
---

Application Notes:	Immunohistochemistry: Paraffin embedded Human Placenta. Recommended concentration: 5 µg/mL. Western Blot: Preliminary experiments gave an approx 35 kDa band in Human Brain lysates after 1 µg/mL antibody staining. Please note that currently we cannot find an explanation in the literature for the band we observe given the calculated size of 118 kDa Peptide ELISA: antibody detection limit dilution 1:64000.
Restrictions:	For Research Use only

## Handling

---

Format:	Liquid
Concentration:	0.5 mg/mL
Buffer:	Supplied at 0.5 mg/mL in Tris saline, 0.02 % sodium azide, pH 7.3 with 0.5 % bovine serum albumin.
Preservative:	Sodium azide
Precaution of Use:	This product contains Sodium azide: a POISONOUS AND HAZARDOUS SUBSTANCE which should be handled by trained staff only.
Handling Advice:	Minimize freezing and thawing.
Storage:	-20 °C
Storage Comment:	Aliquot and store at -20°C, with minimal freeze/thawing. A working aliquot may be refrigerated at 4°C for a few weeks and still remain viable.



### Immunohistochemistry

**Image 1.** ABIN940556 (5µg/ml) staining of paraffin embedded Human Placenta. Steamed antigen retrieval with citrate buffer pH 6, AP-staining.