

Datasheet for ABIN940565  
**anti-SLC6A4 antibody (AA 605-618)**

## 2 Images

[Go to Product page](#)

## Overview

Quantity:	100 µg
Target:	SLC6A4
Binding Specificity:	AA 605-618
Reactivity:	Human
Host:	Goat
Clonality:	Polyclonal
Conjugate:	This SLC6A4 antibody is un-conjugated
Application:	ELISA, Flow Cytometry (FACS), Immunofluorescence (IF)

## Product Details

Purpose:	SLC6A4 (aa605-618)
Immunogen:	Peptide with sequence C-KERIIKSITPETPT, from the C Terminus of the protein sequence according to NP_001036.1.
Sequence:	KERIIKSITP ETPT
Isotype:	IgG
Cross-Reactivity:	Cow, Human, Mouse, Rat
Purification:	Purified from goat serum by ammonium sulphate precipitation followed by antigen affinity chromatography using the immunizing peptide.
Grade:	Verified

## Target Details

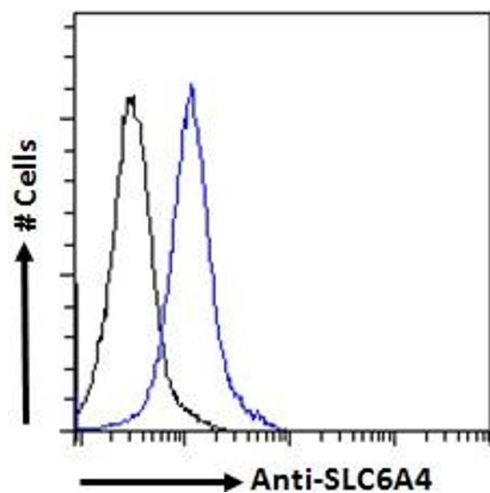
Target:	SLC6A4
Alternative Name:	SLC6A4 ( <a href="#">SLC6A4 Products</a> )
Background:	SLC6A4, solute carrier family 6 (neurotransmitter transporter, serotonin), member 4, 5-HTT, 5-HTTLPR, 5HTT, HTT, OCD1, SERT, hSERT, 5-hydroxytryptamine transporter, 5HT transporter, Na+/Cl- dependent serotonin transporter, OTTHUMP00000163632, OTTHUMP00000
Gene ID:	6532, 15567, 25553
NCBI Accession:	<a href="#">NP_001036</a>

## Application Details

Application Notes:	Peptide ELISA: antibody detection limit dilution 1:32000.
Comment:	<b>Immunofluorescence:</b> Strong expression of the protein seen in the Golgi apparatus/vesicles of HepG2 cells. Recommended concentration: 10µg/ml. <b>Flow Cytometry:</b> Flow cytometric analysis of Jurkat cells. Recommended conce
Restrictions:	For Research Use only

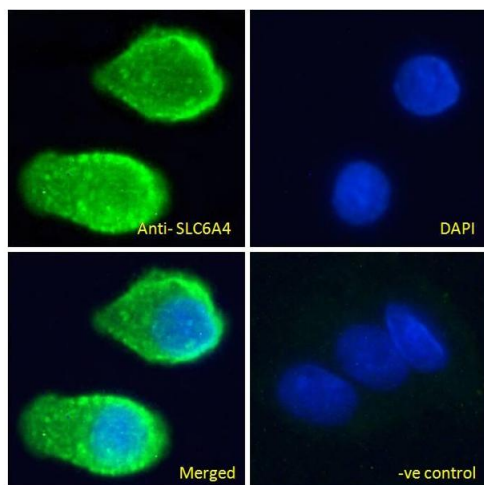
## Handling

Format:	Liquid
Concentration:	0.5 mg/mL
Buffer:	Supplied at 0.5 mg/mL in Tris saline, 0.02 % sodium azide, pH 7.3 with 0.5 % bovine serum albumin.
Preservative:	Sodium azide
Precaution of Use:	This product contains Sodium azide: a POISONOUS AND HAZARDOUS SUBSTANCE which should be handled by trained staff only.
Handling Advice:	Minimize freezing and thawing.
Storage:	-20 °C
Storage Comment:	Aliquot and store at -20°C, with minimal freeze/thawing. A working aliquot may be refrigerated at 4°C for a few weeks and still remain viable.



### Flow Cytometry

**Image 1.** ABIN940565 Flow cytometric analysis of paraformaldehyde fixed Jurkat cells (blue line), permeabilized with 0.5% Triton. Primary incubation 1hr (10ug/ml) followed by Alexa Fluor 488 secondary antibody (2ug/ml). IgG control: Unimmunized goat IgG (black line) f



### Immunofluorescence

**Image 2.** ABIN940565 Immunofluorescence analysis of paraformaldehyde fixed HepG2 cells, permeabilized with 0.15% Triton. Primary incubation 1hr (10ug/ml) followed by Alexa Fluor 488 secondary antibody (2ug/ml), showing Golgi apparatus/vesicle staining. The nuclear stain is DAPI (blue). Negative control: Unimmunized goat IgG (10ug/ml) followed by Alexa Fluor 488 secondary antibody (2ug/ml).